

# NET PRICES EURO - JANUARY 2025

## Exterior Street/Park luminaires



Way  
page 2-4  
Way top  
page 5-6



Peak 380  
page 7  
Peak 320  
page 8



Nyx 330  
page 9-10



Nyx 450  
page 11



Space  
page 14



Sky Park  
page 15



Sticks 3000  
page 17



Dua High  
page 19



Turn Street  
page 11



Turn Spot  
Turn Gobo  
page 11-12

## Exterior Bollards



Sky Bollard  
page 16



Sticks 900  
page 16



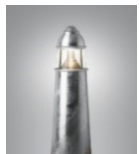
Nyx Bollard  
page 22



Dua Bollard  
Dua Low  
page 18



Tema Bollard  
page 20



Pharos  
page 21

## Interior/Exterior Wall



Sky Wall  
page 14



Pelée Wall  
page 42



Nyx 190  
Nyx 330  
page 23-24



Quarto 270  
Quarto 380  
page 25-27



Square 190  
Square 250  
Square 270  
page 30-31



Stoa  
page 32



Tema Buen  
page 33

## Interior Downlights



Yoyo  
page 34-35



Pelée  
page 39-40



Pelée  
Downlight  
page 41



H+M  
page 46-47



Punkt Lamp  
page 49-50

## Interior Suspended



Yoyo Pendant  
page 36



Pelée Pendant  
page 38



Yoyo Line  
page 37



Pelée Line  
page 43-45



H+M Pendant  
page 48

Yoyo Outdoor  
page 38

LED modules: page 51-52  
Poles: page 53-59  
Colours: page 60  
Sales and delivery terms: page 61

The prices quoted in this price list are excl. VAT, duty and any other taxes.

Prices can be changed without notice. Please see terms enclosed.

**FOCUS-LIGHTING**

WAY SIDE ENTRY, Ø48



Side entry Ø48, FF-DA board with T3 lenses for local roads, P, HS, and C classes			
Item No.	Definition	Net price excl. VAT	EUR
9810-	LED 3xFF-DA, T3, programmable, 10.5 m lead		823
9812-	LED 4xFF-DA, T3, programmable, 10.5 m lead		916

Side entry Ø48, FF-DA board with MEW lenses for traffic roads, M classes			
Item No.	Definition	Net price excl. VAT	EUR
9815-	LED 3xFF-DA, MEW, programmable, 10.5 m lead		823
9816-	LED 4xFF-DA, MEW, programmable, 10.5 m lead		916

Side entry Ø48, FF-DA board with T4 lenses for roundabouts and wide roads			
Item No.	Definition	Net price excl. VAT	EUR
9813-	LED 3xFF-DA, T4, programmable, 10.5 m lead		823
9814-	LED 4xFF-DA, T4, programmable, 10.5 m lead		916

Side entry Ø48, FF-DA board with PX lenses for pedestrian crossings			
Item No.	Definition	Net price excl. VAT	EUR
9817-	LED 3xFF-DA, PX, programmable, 10.5 m lead		823
9818-	LED 4xFF-DA, PX, programmable, 10.5 m lead		916

Select colour, colour temperature, etc in the table below and construct the order code as shown below.							
Colour	Price	Colour temperature	Price	Control/Dimming	Price	Protection class	Price
01 = raw anodized	0	730 = 3000 K, 70 Ra	0	empty = programmable	0	empty = class II	0
4 = graphite grey	0	740 = 4000 K, 70 Ra	0	D = DALI-2	0	J = class I	0
9 = silver grey	0	827* = 2700 K, 80 Ra	0	F = LineSwitch	0		
17 = corten brown	0	830* = 3000 K, 80 Ra	0	R = Zhaga socket up, D4i	134	N = Halogen-free cable	13
66 = noir 900	0	840* = 4000 K, 80 Ra	0	RC = CityTch/InteractCity, D4i	134	X = Varistor 10 kV	54
Other RAL colours	67	* Longer lead times		S = Zhaga socket down, D4i	67		
				RS = Zhaga sockets up/down,	168		
<b>Corrosion coating</b>			<b>Price</b>				
C5 = C5 coating			81				
Add C5 after the colour code. Example: 9810-9C5730							
<b>Example product code:</b> 9810-9730J = Way side entry Ø48, 3xFF, T3 lenses, silver grey, 3000K 70 Ra, cl. I							
See lumen packages in the Way specs at <a href="http://focus-lighting.dk">focus-lighting.dk</a>							

WAY SIDE ENTRY, Ø60

<b>Side entry Ø60, FF-DA board with T3 lenses for local roads, P, HS, and C classes</b>			
Item No.	Definition	Net price excl. VAT	EUR
9870-	LED 3xFF-DA, T3, programmable, 10.5 m lead		823
9872-	LED 4xFF-DA, T3, programmable, 10.5 m lead		916

<b>Side entry Ø60, FF-DA board with MEW lenses for traffic roads, M classes</b>			
Item No.	Definition	Net price excl. VAT	EUR
9875-	LED 3xFF-DA, MEW, programmable, 10.5 m lead		823
9876-	LED 4xFF-DA, MEW, programmable, 10.5 m lead		916

<b>Side entry Ø60, FF-DA board with T4 lenses for roundabouts and wide roads</b>			
Item No.	Definition	Net price excl. VAT	EUR
9873-	LED 3xFF-DA, T4, programmable, 10.5 m lead		823
9874-	LED 4xFF-DA, T4, programmable, 10.5 m lead		916

<b>Side entry Ø60, FF-DA board with PX lenses for pedestrian crossings</b>			
Item No.	Definition	Net price excl. VAT	EUR
9877-	LED 3xFF-DA, PX, programmable, 10.5 m lead		823
9878-	LED 4xFF-DA, PX, programmable, 10.5 m lead		916

Select colour, colour temperature, etc in the table below and construct the order code as shown below.							
Colour	Price	Colour temperature	Price	Control/Dimming	Price	Protection class	Price
01 = raw anodized	0	730 = 3000 K, 70 Ra	0	empty = programmable	0	empty = class II	0
4 = graphite grey	0	740 = 4000 K, 70 Ra	0	D = DALI-2	0	J = class I	0
9 = silver grey	0	827* = 2700 K, 80 Ra	0	F = LineSwitch	0		
17 = corten brown	0	830* = 3000 K, 80 Ra	0	R = Zhaga socket up, D4i	134	N= Halogen-free cable	13
66 = noir 900	0	840* = 4000 K, 80 Ra	0	RC = CityTch/InteractCity, D4i	134	X = Varistor 10 kV	54
Other RAL colours	67	* Longer lead times		S = Zhaga socket down, D4i	67		
				RS = Zhaga sockets up/down, I	168		
<b>Corrosion coating</b>			<b>Price</b>				
C5 = C5 coating			<b>81</b>				
Add C5 after the colour code. Example: 9810-9C5730							

<b>Example product code:</b> 9870-9730J = Way side entry Ø60, 3xFF, T3 lenses, silver grey, 3000K 70 Ra, cl. I
See lumen packages in the Way specs at <a href="http://focus-lighting.dk">focus-lighting.dk</a>

**WAY PARK**



<b>Side entry Ø48, circular board with diffuser</b>			
Item No.	Definition	Net price excl. VAT	EUR
9808-	LED Ø240, programmable, 10.5 m lead		<b>976</b>

<b>Side entry Ø60, circular board with diffuser</b>			
Item No.	Definition	Net price excl. VAT	EUR
9908-	LED Ø240, programmable, 10.5 m lead		<b>976</b>

Select colour, colour temperature, etc in the table below and construct the order code as shown below.

Colour	Price	Colour temperature	Price	Control/Dimming	Price	Protection class	Price
01 = raw anodized	0	830 = 3000 K, 80 Ra	0	empty = programmable	0	empty = class II	0
4 = graphite grey	0	840 = 4000 K, 80 Ra	0	D = DALI-2	0	J = class I	0
9 = silver grey	0			F = LineSwitch	0		
17 = corten brown	0			R = Zhaga socket up, D4i	134	N= Halogen-free cable	13
66 = noir 900	0			RC = CityTch/InteractCity, D4i	134	X = Varistor 10 kV	54
Other RAL colours	67			S = Zhaga socket down, D4i	67		
				RS = Zhaga sockets up/down, I	168		
<b>Corrosion coating</b>			<b>Price</b>				
C5 = C5 coating			<b>81</b>				

Add C5 after the colour code. Example: 9810-9C5730

**Example product code:** 9808-66830J = Way Park, circular board, noir 900, 3000K 80 Ra, class I  
 See lumen packages in the Way specs at [focus-lighting.dk](http://focus-lighting.dk)

## WAY TOP ENTRY

The luminaire is supplied with the lead length ordered.



Top entry, FF-DA with T3 symmetric lenses		
Item No.	Definition	Net price excl. VAT EUR
9850-	LED 3xFF-DA, T3, programmable	823
9888-	LED 4xFF-DA, T3, programmable	916

Top entry, FF-DA with MEW symmetric lenses		
Item No.	Definition	Net price excl. VAT EUR
9854-	LED 3xFF-DA, MEW, programmable	823
9889-	LED 4xFF-DA, MEW, programmable	916

Top entry, FF-DA board with CAT lenses		
Item No.	Definition	Net price excl. VAT EUR
9856-	LED 3xFF-DA, CAT, programmable	823
9890-	LED 4xFF-DA, CAT, programmable	916

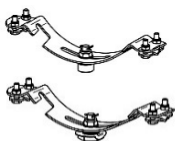
Select colour, colour temperature, and lead in the table below and construct the order code as shown below.							
Colour	Price	Colour temperature	Price	Lead	Price	Control/Dimming	Price
01 = raw anodized	0	730 = 3000 K, 70 Ra	0	2 = 2 pcs 2 m 1x2.5 mm2	0	empty = programmable	0
4 = graphite grey	0	740 = 4000 K, 70 Ra	0	10 = 1 pcs 10 m 2x1 mm2	0	D = DALI-2	0
9 = silver grey	0	827* = 2700 K, 80 Ra	0			F = LineSwitch	0
17 = corten brown	0	830* = 3000 K, 80 Ra	0			R = Zhaga socket up, D4i	134
66 = noir 900	0	840* = 4000 K, 80 Ra	0			RC = CityTch/InteractCity, D4i	134
Other RAL colours	67	* Longer lead times				S = Zhaga socket down, D4i	67
						RS = Zhaga sockets up/down, D	168
<b>Protection class</b>	<b>Price</b>						
empty = class II	0					X = Varistor 10 kV	54
J = class I	0						

Corrosion coating	Price
C5 = C5 coating	81

Add C5 after the colour code. Example: 9850-9C5730

<b>Example:</b> 9850-98302J = Way, top entry, 3x FF-DA board, T3 lenses, silver grey, 3000K 80 Ra, 2 m lead, class I
See lumen packages in the Way specs at <a href="http://focus-lighting.dk">focus-lighting.dk</a>

## OPTIONAL COMPONENTS



Product code	Type	Net price excl. VAT EUR
1715-0	Wire hanger for suspension in single wire	134
1716-0	Wire hanger for suspension in single wire, Way with Zhaga socket	134
1717-0	Fittings for top mounting of Way with Zhaga socket	16
1718-0	Connection box, class II	27

## WAY TOP ENTRY

The luminaire is supplied with the lead length ordered.



Top entry, circular LED board with CAT lenses		
Item No.	Definition	Net price excl. VAT EUR
9801-	LED Ø240, Low lumen, programmable	976
9802-	LED Ø240, High lumen, programmable	976

Select colour, colour temperature, and lead in the table below and construct the order code as shown below.

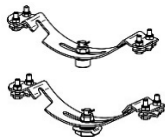
Colour	Price	Colour temperature	Price	Lead	Price	Control/Dimming	Price
01 = raw anodized	0	830 = 3000 K, 80 Ra	0	2 = 2 pcs 2 m 1x2.5 mm2	0	empty = programmable	0
4 = graphite grey	0	840 = 4000 K, 80 Ra	0	10 = 1 pcs 10 m 2x1 mm2	0	D = DALI-2	0
9 = silver grey	0					F = LineSwitch	0
17 = corten brown	0			N= Halogen-free cables	13	R = Zhaga socket up, D4i	134
66 = noir 900	0					RC = CityTch/InteractCity, D4i	134
Other RAL colours	67					S = Zhaga socket down, D4i	67
						RS = Zhaga sockets up/down, D	168
<b>Protection class</b>	<b>Price</b>						
empty = class II	0					X = Varistor 10 kV	54
J = class I	0						

Corrosion coating	Price
C5 = C5 coating	81
Add C5 after the colour code. Example: 9801-9C5830	

**Example:** 9801-98302J = Way, top entry, circular board, CAT lenses, silver grey, 3000K 80 Ra, 2 m lead, class I

See lumen packages in the Way specs at [focus-lighting.dk](http://focus-lighting.dk)

## OPTIONAL COMPONENTS



Product code	Type	Net price excl. VAT EUR
1715-0	Wire hanger for suspension in single wire	134
1716-0	Wire hanger for suspension in single wire, Way with Zhaga socket	134
1717-0	Fittings for top mounting of Way with Zhaga socket	16
1718-0	Connection box, class II	27

**PEAK 380**

The luminaire is supplied with 8.5 m lead for post top, + 2 meter in case of side entry.



<b>Ø 380 mm, FF-DA board with T3 lenses for local roads, P, HS, and C classes</b>			
Product code	Definition	Net price excl. VAT	EUR
8950-	LED 1xFF-DA, T3, programmable, 8.5 m lead		701
8951-	LED 2xFF-DA, T3, programmable, 8.5 m lead		792
8952-	LED 3xFF-DA, T3, programmable, 8.5 m lead		884

<b>Ø 380 mm, FF-DA board with MEW lenses for traffic roads, M classes</b>			
Product code	Definition	Net price excl. VAT	EUR
8970-	LED 1xFF-DA, MEW, programmable, 8.5 m lead		701
8971-	LED 2xFF-DA, MEW, programmable, 8.5 m lead		792
8973-	LED 3xFF-DA, MEW, programmable, 8.5 m lead		884

<b>Ø 380 mm, FF-DA board with T4 lenses for roundabouts and wide roads</b>			
Product code	Definition	Net price excl. VAT	EUR
8955-	LED 1xFF-DA, T4, programmable, 8.5 m lead		701
8956-	LED 2xFF-DA, T4, programmable, 8.5 m lead		792
8957-	LED 3xFF-DA, T4, programmable, 8.5 m lead		884

<b>Ø 380 mm, FF-DA board with PX lenses for pedestrian crossings</b>			
Product code	Definition	Net price excl. VAT	EUR
8980-	LED 1xFF-DA, PX, programmable, 8.5 m lead		701
8981-	LED 2xFF-DA, PX, programmable, 8.5 m lead		792
8982-	LED 3xFF-DA, PX, programmable, 8.5 m lead		884

Select colour, colour temperature, and mounting in the table below and construct the order code as shown below.							
Colour	Price	Colour temperature	Price	Mounting	Price	Control/Dimming	Price
01 = raw anodized	0	730 = 3000 K, 70 Ra	0	T = post top	0	empty = programmed	0
4 = graphite grey	0	740 = 4000 K, 70 Ra	0	U = side entry	0	D = DALI-2	0
9 = silver grey	0	827* = 2700 K, 80 Ra	0	G = mid-post housing	148	F = LineSwitch	0
66 = noir 900	0	830* = 3000 K, 80 Ra	0	G76 = mid-post Ø76	148	R = Zhaga socket up, D4i	67
Other RAL colours	67	840* = 4000 K, 80 Ra	0			RC = CityTch/InteractCity, D4i	67
		* Longer lead times				S = Zhaga socket down, D4i	67
<b>Protection class</b>	<b>Price</b>					RS = Zhaga sockets up/down, D4i	94
empty = class II	0						
J = class I	0					N = Halogen-free cables	13
						X = Varistor 10 kV	54
<b>Corrosion coating</b>			<b>Price</b>				
C5 = C5 coating			81				
Add C5 after the colour code. Example: 8951-9C5730							

**Example product code:** 8951-9730TJ = Peak 380, 2xFF-DA, T3, silver grey, 3000K 70 Ra, post top, class I  
See lumen packages in the Peak specs at [focus-lighting.dk](http://focus-lighting.dk)

**PEAK 320**

The luminaire is supplied with the lead length ordered.



<b>Peak 320, with T3 lenses for local roads</b>			
<b>Product code</b>	<b>Definition</b>	<b>Net price excl. VAT</b>	<b>EUR</b>
8710-	LED 1xFF-DA 2x6, T3, Low lumen, programmable, 5.5 m lead		<b>524</b>
8711-	LED 1xFF-DA 2x6, T3, High lumen, programmable, 5.5 m lead		<b>524</b>

<b>Peak 320, with SCL lenses</b>			
<b>Product code</b>	<b>Definition</b>	<b>Net price excl. VAT</b>	<b>EUR</b>
8712-	LED 1xFF-DA 2x6, SCL, Low lumen, programmable, 5.5 m lead		<b>524</b>
8713-	LED 1xFF-DA 2x6, SCL, High lumen, programmable, 5.5 m lead		<b>524</b>

<b>Peak 320, with MEW lenses for traffic roads</b>			
<b>Product code</b>	<b>Definition</b>	<b>Net price excl. VAT</b>	<b>EUR</b>
8714-	LED 1xFF-DA 2x6, MEW, Low lumen, programmable, 5.5 m lead		<b>524</b>
8715-	LED 1xFF-DA 2x6, MEW, High lumen, programmable, 5.5 m lead		<b>524</b>

Select colour, colour temperature, and mounting in the table below and construct the order code as shown below.							
<b>Colour</b>	<b>Price</b>	<b>Colour temperature</b>	<b>Price</b>	<b>Mounting</b>	<b>Price</b>	<b>Control/Dimming</b>	<b>Price</b>
01 = raw anodized	0	722 = 2200 K, 70 Ra	0	T = post top	0	empty = programmed	0
4 = graphite grey	0	730 = 3000 K, 70 Ra	0	U = side entry	0	D = DALI-2	0
9 = silver grey	0	740 = 4000 K, 70 Ra	0			F = LineSwitch	0
Other RAL colours	67	827 = 2700 K, 80 Ra	0			R = Zhaga socket up, D4i	67
		830 = 3000 K, 80 Ra	0			RC = CityTch/InteractCity, D4i	67
						S = Zhaga socket down, D4i	67
<b>Protection class</b>	<b>Price</b>					RS = Zhaga sockets up/down, D4i	<b>94</b>
empty = class II	0						
J = class I	0					N = Halogen-free cables	13
						X = Varistor 10 kV	54
<b>Corrosion coating</b>			<b>Price</b>				
C5 = C5 coating			81				
Add C5 after the colour code. Example: 8951-9C5730							
<b>Example:</b> 8710-9730T = Peak 320, 1xFF-DA 6x2, low lumen, T3, silver, 3000K 70 Ra, Top mount, class II							
See lumen packages in the Peak specs at <a href="http://focus-lighting.dk">focus-lighting.dk</a>							

**NYX 330 POLE TOP**

The luminaire is supplied with 5.5 m lead, 2 x 1 mm<sup>2</sup>.



<b>Ø 330 mm, LED FF-DA board with T3 lenses for local roads, P, HS, and C classes</b>			
Product code	Definition	Net price excl. VAT	EUR
8914-	1xFF-DA, T3, High lumen, programmable, 5.5 m lead		<b>670</b>
8918-	1xFF-DA, T3, Low lumen, programmable, 5.5 m lead		<b>670</b>

<b>Ø 330 mm, LED FF-DA board with SCL lenses for pathways</b>			
Product code	Definition	Net price excl. VAT	EUR
8913-	1xFF-DA, SCL, High lumen, programmable, 5.5 m lead		<b>670</b>
8919-	1xFF-DA, SCL, Low lumen, programmable, 5.5 m lead		<b>670</b>

Select colour, colour temperature, lead length etc. in the table below and construct the order code as shown below.

Colour	Price	Colour temperature	Price	Control/Dimming	Price	Protection class	Price
01 = raw anodized	0	730 = 3000 K, 70 Ra	0	empty = programmed	0	empty = class II	0
3 = black RAL 9005	0	740 = 4000 K, 70 Ra	0	D = DALI-2	0	J = class I	0
4 = graphite grey	0	827* = 2700 K, 80 Ra	0	F = LineSwitch	0		
9 = silver grey	0	830* = 3000 K, 80 Ra	0	R = Zhaga socket up, D4i	67	N = Halogen-free ca	13
17 = corten brown	0	840* = 4000 K, 80 Ra	0	RC = CityTch/InteractCity, D4i	67	X = Varistor 10 kV	54
66 = black noir 900	0	* Longer lead times		S = Zhaga socket down, D4i	67		
Other RAL colours	67			RS = Zhaga sockets up/down, D4i	94		

Corrosion coating	Price
C5 = C5 coating	<b>81</b>

Add C5 after the colour code. Example: 8914-9C5730

**Example Order code:** 8914-9730J = Nyx 330 FF-DA, T3, High lumen, silver grey, 3000K, 70 Ra, class I

See lumen packages in the Nyx specs at [focus-lighting.dk](http://focus-lighting.dk)



<b>Ø 330 mm, LED Comfort with programmable driver</b>			
Product code	Definition	Net price excl. VAT	EUR
8910-	LED Comfort, programmable, 5.5 m lead		<b>610</b>

Select colour, colour temperature, lead length etc. in the table below. Penetrated housing: see below.

Colour	Price	Colour temperature	Price	Control/Dimming	Price	Protection class	Price
01 = raw anodized	0	827 = 2700 K, 80 Ra	0	empty = programmed	0	empty = class II	0
3 = black RAL 9005	0	830 = 3000 K, 80 Ra	0	D = DALI-2	0	J = class I	0
4 = graphite grey	0	840 = 4000 K, 80 Ra	0	F = LineSwitch	0		
9 = silver grey	0	730 = 3000 K, 70 Ra	0	R = Zhaga socket up, D4i	67	<b>Screen type</b>	<b>Price</b>
17 = corten brown	0	740 = 4000 K, 70 Ra	0	RC = CityTch/InteractCity, D4i	67	empty = frosted	0
66 = black noir 900	0			S = Zhaga socket down, D4i	67	O = opal-white	0
Other RAL colours	67			RS = Zhaga sockets up/down, D4i	94		

Corrosion coating	Price
C5 = C5 coating	<b>81</b>

Add C5 after the colour code. Example: 8914-9C5730

**Example Order code:** 8910-9830JG = Nyx 330 Comfort, silver grey, 3000K 80 Ra, 5.5 m lead, cl. I, mid-post mount

See lumen packages in the Nyx specs at [focus-lighting.dk](http://focus-lighting.dk)



Mid-column housing	Price
empty = post top	0
G = mid-column mount	<b>101</b>

In case of mid-column mounting, please add the letter G to the order code.

## OPTIONAL COMPONENTS



Special shade for Nyx 330			
Product code	Description	Net price excl. VAT	EUR
06034	Lamella shade		54
1712-1	Adapter for 48 and 42 mm post top		27



Double arm for Nyx 330			
Product code	Description	Net price excl. VAT	EUR
8001-	Double arm, 2 x 400 mm, galvanised		336
8002-	Double arm, 2 x 800 mm, galvanised		349

Select colour in the table below.

Colour	Price
3 = black RAL 9005	81
4 = graphite grey	81
7 = galvanised	0
9 = silver grey	81
17 = corten brown	81
66 = black noir 900	81
Other RAL colours	81

**Example Order code:** 8001-9 = 2x400 mm double arm for Nyx 330, silver grey

**NYX 450**

The luminaire is supplied with 9.5 m lead, 2 x 1 mm<sup>2</sup>, + 2 meter in case of side entry



<b>Ø 450 mm, FF-DA board with T3 lenses for local roads, P, HS, and C classes</b>			
Product code	Definition	Net price excl. VAT	EUR
9930-	LED 2xFF-DA, T3, programmable, 9.5 m lead		916
9931-	LED 3xFF-DA, T3, programmable, 9.5 m lead		999
9932-	LED 4xFF-DA, T3, programmable, 9.5 m lead		1082

<b>Ø 450 mm, FF-DA board with MEW lenses for traffic roads, M classes</b>			
Product code	Definition	Net price excl. VAT	EUR
9950-	LED 2xFF-DA, MEW, programmable, 9.5 m lead		916
9951-	LED 3xFF-DA, MEW, programmable, 9.5 m lead		999
9952-	LED 4xFF-DA, MEW, programmable, 9.5 m lead		1082

<b>Ø 450 mm, FF-DA board with T4 lenses for roundabouts and wide roads</b>			
Product code	Definition	Net price excl. VAT	EUR
9940-	LED 2xFF-DA, T4, programmable, 9.5 m lead		916
9941-	LED 3xFF-DA, T4, programmable, 9.5 m lead		999
9942-	LED 4xFF-DA, T4, programmable, 9.5 m lead		1082

<b>Ø 450 mm, FF-DA board with PX lenses for pedestrian crossings</b>			
Product code	Definition	Net price excl. VAT	EUR
9955-	LED 2xFF-DA, PX, programmable, 9.5 m lead		916
9956-	LED 3xFF-DA, PX, programmable, 9.5 m lead		999

Select colour, colour temperature, and mounting in the table below and construct the order code as shown below.							
Colour	Price	Colour temperature	Price	Mounting	Price	Control/Dimming	Price
01 = raw anodized	0	730 = 3000 K, 70 Ra	0	T = post top	0	empty = programmed	0
4 = graphite grey	0	740 = 4000 K, 70 Ra	0	U = side entry Ø60	0	D = DALI-2	0
9 = silver grey	0	827* = 2700 K, 80 Ra	0	U48 = side entry Ø48	40	F = LineSwitch	0
66 = noir 900	0	830* = 3000 K, 80 Ra	0	G = mid-post housing	148	R = Zhaga socket up, D4i	67
Other RAL colours	67	840* = 4000 K, 80 Ra	0	G76 = mid-post Ø76	148	RC = CityTch/InteractCity, D4i	67
		* Longer lead times				S = Zhaga socket down, D4i	67
<b>Protection class</b>	<b>Price</b>					RS = Zhaga sockets up/down, D	94
empty = class II	0						
J = class I	0					N= Halogen-free cables	13
<b>Corrosion coating</b>			<b>Price</b>			X = Varistor 10 kV	54
C5 = C5 coating			81				
Add C5 after the colour code. Example: 9930-9C5730							

**Example Order code:** 9951-9740TJ = Nyx 450 3xFF, MEW, silver grey, 4000K 70 Ra, post top mounting, class I  
See lumen packages in the Nyx specs at [focus-lighting.dk](http://focus-lighting.dk)

**OPTIONAL COMPONENTS**

Product code	Description	Net price excl. VAT	EUR
9023-	Wall bracket		161
Colour	Price		
4 = graphite grey	0		
9 = silver grey	0		
66 = noir 900	0		

**TURN**

8.5 m lead included



<b>Turn Spot</b>			
Product code	Beam angle	Definition	Net price excl. VAT EUR
8836-	Wide 38°	Bridgelux V18, programmable	839
8837-	Medium 19°	Bridgelux V18, programmable	839
8838-	Narrow 12°	Bridgelux V18, programmable	839

<b>Turn Spot Halo</b>			
Product code	Beam angle	Definition	Net price excl. VAT EUR
8840-	Wide 38°	Bridgelux V18, programmable	839
8841-	Medium 19°	Bridgelux V18, programmable	839
8842-	Narrow 12°	Bridgelux V18, programmable	839

Select colour, colour temperature, lead length etc. in the table below and construct the order code as shown below.

Colour	Price	Colour temperature	Price	Control/Dimming	Price	Protection class	Price
01 = raw anodized	0	827 = 2700 K, 80 Ra	0	empty = programmed	0	empty = class II	0
4 = graphite grey	0	830 = 3000 K, 80 Ra	0	D = DALI-2	0	J = class I	0
9 = silver grey	0	840 = 4000 K, 80 Ra	0	F = LineSwitch	0		
17 = corten brown	0			R = Zhaga socket up, D4i	134		
66 = noir 900	0			RC = CityTch/InteractCity, D4i	134		
Other RAL colours	67						
<b>Filter</b>		<b>Mounting brackets</b>					
empty = no filter	0	empty = bracket for cylindrical pole, Ø76 mm		0			
Y = honeycomb filter	20	B90 = brackets for conical pole, Ø60-90 mm		134			
		B121 = brackets for conical pole, Ø91-121 mm		134			
		Adapter for Ø60 mm rod, see options under Poles					
<b>Corrosion coating</b>			<b>Price</b>				
C5 = C5 coating			81				

Add C5 after the colour code. Example: 8836-9C5730

**Example Order code:** 8836-4840DJ = Turn Spot, wide, graphite grey, 4000 K, 80 Ra, Dali, class I, for cylindrical pole



<b>Turn Street Halo</b>			
Product code	Definition	Net price excl. VAT EUR	
8920-	LED 1xDA 2x4, T3 lenses, programmable	839	

Select colour, colour temperature, lead length etc. in the table below and construct the order code as shown below.

Colour	Price	Colour temperature	Price	Control/Dimming	Price	Protection class	Price
01 = raw anodized	0	827 = 2700 K, 80 Ra	0	empty = programmed	0	empty = class II	0
4 = graphite grey	0	830 = 3000 K, 80 Ra	0	D = DALI-2	0	J = class I	0
9 = silver grey	0	840 = 4000 K, 80 Ra	0	F = LineSwitch	0		
17 = corten brown	0			R = Zhaga socket up, D4i	134		
66 = noir 900	0			RC = CityTch/InteractCity, D4i	134		
Other RAL colours	67						
<b>Mounting brackets</b>							
empty = bracket for cylindrical pole, Ø76 mm			0				
B90 = brackets for conical pole, Ø60-90 mm			134				
B121 = brackets for conical pole, Ø91-121 mm			134				
Adapter for Ø60 mm rod, see options under Poles							
<b>Corrosion coating</b>				<b>Price</b>			
C5 = C5 coating				81			

Add C5 after the colour code. Example: 8920-9C5730

**Example Order code:** 8920-66730J = Turn Street Halo, black noir 900, 3000 K, 70 Ra, class I, for cylindrical pole



<b>Turn Gobo</b>						
Product code	Definition				Net price excl. VAT	EUR
8846-	LED 40 W, 85 mm lens "standard"					3280
8848-	LED 40 W, 63 mm lens "wide"					3280
Select colour, control, etc. in the table below and add the code to the item number.						
Colour	Price	Control	Price	Mounting brackets	Price	
01 = raw anodized	0	D = DALI-2	108	empty = bracket for cylindrical pole, Ø76 mm	0	
4 = graphite grey	0			B90 = brackets for conical pole, Ø60-90 mm	134	
9 = silver grey	0	Protection class	Price	B121 = brackets for conical pole, Ø91-121 mm	134	
17 = corten brown	0	empty = class II	0	Adapter for Ø60 mm rod, see options under Poles		
66 = noir 900	0	J = class I	0			
Other RAL colours	67					
Corrosion coating			Price			
C5 = C5 coating			81			
Add C5 after the colour code. Example: 8920-9C5730						

**Example Order code:** 8846-66J = Turn Gobo, black noir 900, class I

<b>Gobo glass 50 mm + colour filters</b>						
Product code	Definition				Net price excl. VAT	EUR
8846-008	Gobo glass, black/white					53
8846-0081	Gobo glass, black + colour filter or colour correction filter (3000 or 4000 K) (whole glass)					71
8846-0082	Gobo glass, 1 colour filter (adjusted to graphics)					108
8846-0083	Gobo glass, 2 colour filters					175
8846-0084	Gobo glass, 3 colour filters					220
8846-0085	Gobo glass, multicolour 4c					264
8846-0086	Gobo glass, grey scale					71

**We grant no discount on Gobo glass and filters.**



<b>Turn bracket for wall mounting</b>						
Product code	Definition				Net price excl. VAT	EUR
8011-	Bracket for 1 spot. Spot and bracket will be assembled by Focus Lighting.					479
8012-	Bracket for 2 spots. Spots and bracket will be assembled by Focus Lighting.					509
Select colour in the table below.						
Colour	Price					
01 = raw anodized	0					
4 = graphite grey	0					
9 = silver grey	0					
17 = corten brown	0					
66 = black noir 900	0					
Other RAL colours	54					

SPACE



Ø 640 mm, symmetrical			
Product code	Definition	Net price excl. VAT	EUR
8880-	Bridgelux V18 Low lumen, programmable, 5.5 m lead included		947
8882-	Bridgelux V22 High lumen, programmable, 5.5 m lead included		947

Ø 640 mm, asymmetrical type IV			
Product code	Definition	Net price excl. VAT	EUR
8901-	Bridgelux V18 Low lumen, programmable, 5.5 m lead included		947
8902-	Bridgelux V22 High lumen, programmable, 5.5 m lead included		947

Ø 640 mm, asymmetrical type II			
Product code	Definition	Net price excl. VAT	EUR
8884-	Bridgelux V18 Low lumen, programmable, 5.5 m lead included		947
8885-	Bridgelux V22 High lumen, programmable, 5.5 m lead included		947

Select colour and colour temperature in the table below and construct the order code as shown below.							
Colour	Price	Colour temperature	Price	Mounting	Price	Control/Dimming	Price
01 = raw anodized	0	827 = 2700 K, 80 Ra	0	empty = Ø60 mm pole	0	empty = programmed	0
4 = graphite grey	0	830 = 3000 K, 80 Ra	0	M76 = Ø76 mm pole	47	D = DALI-2	0
9 = silver grey	0	840 = 4000 K, 80 Ra	0			F = LineSwitch	0
17 = corten brown	0	930* = 3000 K, 90 Ra	0			R = Zhaga socket up, D4i	67
66 = noir 900	0	* Longer lead times				RC = CityTch/InteractCity, D4i	67
Other RAL colours	80					S = Zhaga socket down, D4i	67
<b>Protection class</b>	<b>Price</b>					RS = Zhaga sockets up/down, D	94
empty = class II	0						
J = class I	0					N= Halogen-free cables	13
<b>Corrosion coating</b>				<b>Price</b>		X = Varistor 10 kV	54
C5 = C5 coating				81			

Add C5 after the colour code. Example: 8880-9C5827

**Example Order code: 8882-66830M76J** = Space symmetric, max 6400 lm, black noir 900, 3000K 80Ra, Ø76 pole, cl. I  
See lumen packages in the Space specs at focus-lighting.dk



Accessories		Net price excl. VAT	EUR
8016-	Connection ring for 80/90 mm column diameter		13
8017-	Shade in coated aluminium - combine with the colour codes above.		201

## SKY PARK



Ø 480 mm, LED, programmable driver			
Product code	Definition	Net price excl. VAT	EUR
8833-	Bridgelux V18 Low lumen, programmable, 4 m lead included		839
8930-	Bridgelux V22 High lumen, programmable, 4 m lead included		839

Select colour and colour temperature in the table below and construct the order code as shown below.

Colour	Price	Colour temperature	Price	Mounting	Price	Control/Dimming	Price
01 = raw anodized	0	827 = 2700 K, 80 Ra	0	empty = Ø60 mm pole	0	empty = programmed	0
4 = graphite grey	0	830 = 3000 K, 80 Ra	0	M76 = Ø76 mm pole	47	D = DALI-2	0
9 = silver grey	0	840 = 4000 K, 80 Ra	0			F = LineSwitch	0
17 = corten brown	0	930* = 3000 K, 90 Ra	0			R = Zhaga socket up, D4i	134
66 = noir 900	0	* Longer lead times				RC = CityTch/InteractCity, D4i	134
Other RAL colours	80						
Protection class	Price					N= Halogen-free cables	13
empty = class II	0					X = Varistor 10 kV	54
J = class I	0						

Corrosion coating	Price
C5 = C5 coating	81

Add C5 after the colour code. Example: 8833-9C5827

**Example Order code: 8833-9830J** = Sky Park, max 3800 lm, silver grey, 3000 K 80 Ra, f. Ø60 mm pole, class I

See lumen packages in the Sky specs at [focus-lighting.dk](http://focus-lighting.dk)



Accessories		Net price excl. VAT	EUR
8006-	Shade in coated aluminium - combine with the colour codes above.		60
8005-	Connection ring for 90 mm column		13

## SKY WALL



Ø 480 mm, LED, programmable driver			
Product code	Definition	Net price excl. VAT	EUR
6834-	Bridgelux V18 Low lumen, programmable		1190
6836-	Bridgelux V22 High lumen, programmable		1190

Select colour and colour temperature in the table below and construct the order code as shown below.

Colour	Price	Colour temperature	Price	Dimming	Price	Protection class	Price
01 = raw anodized	0	827 = 2700 K, 80 Ra	0	empty = programmed	0	empty = class II	0
4 = graphite grey	0	830 = 3000 K, 80 Ra	0	D = DALI-2	0	J = class I	0
9 = silver grey	0	840 = 4000 K, 80 Ra	0	F = LineSwitch	0		
17 = corten brown	0	930* = 3000 K, 90 Ra	0				
66 = noir 900	0	* Longer lead times					
Other RAL colours	80						

Corrosion coating	Price
C5 = C5 coating	81

Add C5 after the colour code. Example: 6834-9C5827

**Example Order code: 6834-9827J** = Sky Wall, Low lumen, silver grey, 2700 K 80 Ra, class I

See lumen packages in the Sky specs at [focus-lighting.dk](http://focus-lighting.dk)

**SKY BOLLARD**



<b>H 1020 mm, LED, galvanised</b>				
<b>Product code</b>	<b>Mounting</b>	<b>Definition</b>	<b>Net price excl. VAT</b>	<b>EUR</b>
7852-	rooted base w. cross bars	6 W Bridgelux V8, 250 mA		<b>870</b>
7851-	rooted base for concrete	6 W Bridgelux V8, 250 mA		<b>870</b>
7853-	flanged base	6 W Bridgelux V8, 250 mA		<b>916</b>
7830-	rooted base w. cross bars	9 W Bridgelux V8, 350 mA		<b>870</b>
7833-	rooted base for concrete	9 W Bridgelux V8, 350 mA		<b>870</b>
7836-	flanged base	9 W Bridgelux V8, 350 mA		<b>916</b>
7831-	rooted base w. cross bars	12 W Bridgelux V8, 500 mA		<b>870</b>
7839-	rooted base for concrete	12 W Bridgelux V8, 500 mA		<b>870</b>
7837-	flanged base	12 W Bridgelux V8, 500 mA		<b>916</b>

Select colour and colour temperature in the table below and construct the order code as shown below.							
<b>Colour</b>	<b>Price</b>	<b>Colour temperature</b>	<b>Price</b>	<b>Dimming</b>	<b>Price</b>	<b>Protection class</b>	<b>Price</b>
4 = graphite grey	<b>107</b>	927 = 2700 K, 90 Ra	<b>0</b>	V = 1-10 V	<b>10</b>	empty = class II	<b>0</b>
9 = silver grey	<b>107</b>	930 = 3000 K, 90 Ra	<b>0</b>	D = DALI	<b>20</b>	J = class I	<b>0</b>
7 = silver/galvanised	<b>0</b>	940 = 4000 K, 90 Ra	<b>0</b>	E = programmable	<b>27</b>		
17 = corten brown	<b>107</b>			DE = progr. + DALI-2	<b>40</b>	<b>Surge protection</b>	
66 = noir 900	<b>107</b>					X = 10 kV	<b>54</b>
Other RAL colours	<b>107</b>						

**Example Order code: 7831-4930J** = Sky Bollard rooted base, 12 W LED, graphite grey, 3000 K, 90 Ra, class I

STICKS



<b>Sticks 900, LED, single light slit</b>				
Product code	Mounting	Definition	Net price excl. VAT	EUR
7840-	rooted base	8 W, 500 mA		<b>947</b>
7846-	flanged base	8 W, 500 mA		<b>992</b>
7843-	rooted base	11 W, 700 mA		<b>947</b>
7848-	flanged base	11 W, 700 mA		<b>992</b>

<b>Sticks 900, LED, double light slit</b>				
Product code	Mounting	Definition	Net price excl. VAT	EUR
7841-	rooted base	15 W, 500 mA		<b>1053</b>
7847-	flanged base	15 W, 500 mA		<b>1082</b>
7850-	rooted base	20 W, 700 mA		<b>1053</b>
7849-	flanged base	20 W, 700 mA		<b>1082</b>

Select colour and colour temperature in the table below and construct the order code as shown below.							
Colour	Price	Colour temperature	Price	Dimming	Price	Protection class	Price
01 = raw anodized	<b>0</b>	827 = 2700 K, 80 Ra	<b>0</b>	empty = no dimming	<b>0</b>	empty = class II	<b>0</b>
3 = black	<b>0</b>	830 = 3000 K, 80 Ra	<b>0</b>	V = 1-10 V	<b>10</b>	J = class I	<b>0</b>
4 = graphite grey	<b>0</b>			D = DALI	<b>20</b>		
9 = silver grey	<b>0</b>						
17 = corten brown	<b>0</b>						
66 = noir 900	<b>0</b>						
Other RAL colours	<b>108</b>						

**Example Order code:** 7840-66830 = Sticks 900 single light slit, LED, rooted base, noir 900, 3000 K



<b>Sticks 3000, LED, single light slit</b>				
Product code	Mounting	Definition	Net price excl. VAT	EUR
8834-	rooted base	14 W T8-900 mm LED tube		<b>1816</b>
8844-	flanged base	14 W T8-900 mm LED tube		<b>1860</b>

<b>Sticks 3000, LED, double light slit</b>				
Product code	Mounting	Definition	Net price excl. VAT	EUR
8835-	rooted base	2 x 14 W T8-900 mm LED tube		<b>1847</b>
8845-	flanged base	2 x 14 W T8-900 mm LED tube		<b>1891</b>

Select colour and colour temperature in the table below and construct the order code as shown below.							
Colour	Price	Colour temperature	Price	Protection class	Price		
3 = black	<b>0</b>	730 = 3000 K, 70 Ra	<b>0</b>	empty = class II	<b>0</b>		
4 = graphite grey	<b>0</b>						
9 = silver grey	<b>0</b>						
17 = corten brown	<b>0</b>						
66 = noir 900	<b>0</b>						
Other RAL colours	<b>269</b>						

**Example Order code:** 8834-66730 = Sticks 3000 single light slit, LED, rooted base, noir 900, 3000 K

DUA



<b>Dua Bollard, H 1000 mm</b>				
Product code	Mounting	Definition	Net price excl. VAT	EUR
7980-	rooted base w. cross bars	9 W Bridgelux V8/V6, 250 mA		<b>1142</b>
7982-	rooted base for concrete	9 W Bridgelux V8/V6, 250 mA		<b>1142</b>
7981-	flanged base	9 W Bridgelux V8/V6, 250 mA		<b>1142</b>
7855-	rooted base w. cross bars	12 W Bridgelux V8/V6, 350 mA		<b>1142</b>
7857-	rooted base for concrete	12 W Bridgelux V8/V6, 350 mA		<b>1142</b>
7858-	flanged base	12 W Bridgelux V8/V6, 350 mA		<b>1142</b>

Select colour and colour temperature in the table below and construct the order code as shown below.							
Colour	Price	Colour temperature	Price	Dimming	Price	Protection class	Price
01 = raw anodized	0	927 = 2700 K, 90 Ra	0	V = 1-10 V	10	empty = class II	0
4 = graphite grey	0	930 = 3000 K, 90 Ra	0	D = DALI-2	20	J = class I	0
9 = silver grey	0	940 = 4000 K, 90 Ra	0	E = programmable	47		
17 = corten brown	0			DE = progr. + DALI-2	60	<b>Surge protection</b>	
66 = noir 900	0					X = 10 kV	54
Other RAL colours	80						

**Example Order code: 7855-66930J** = Dua Bollard rooted base, 12 W LED, black noir 900, 3000 K, 90 Ra, class I



<b>Dua Bollard Low, H 570 mm</b>				
Product code	Mounting	Definition	Net price excl. VAT	EUR
7983-	rooted base w. cross bars	6 W Bridgelux V8, 250 mA		<b>889</b>
7985-	rooted base for concrete	6 W Bridgelux V8, 250 mA		<b>889</b>
7984-	flanged base	6 W Bridgelux V8, 250 mA		<b>889</b>
7856-	rooted base w. cross bars	9 W Bridgelux V8, 350 mA		<b>889</b>
7854-	rooted base for concrete	9 W Bridgelux V8, 350 mA		<b>889</b>
7859-	flanged base	9 W Bridgelux V8, 350 mA		<b>889</b>

Select colour and colour temperature in the table below and construct the order code as shown below.							
Colour	Price	Colour temperature	Price	Dimming	Price	Protection class	Price
01 = raw anodized	0	927 = 2700 K, 90 Ra	0	V = 1-10 V	10	empty = class II	0
4 = graphite grey	0	930 = 3000 K, 90 Ra	0	D = Dali-2	20	J = class I	0
9 = silver grey	0	940 = 4000 K, 90 Ra	0				
17 = corten brown	0						
66 = noir 900	0						
Other RAL colours	67						

**Example Order code: 7856-4930J** = Dua Bollard Low rooted base, 9 W LED, graphite grey, 3000 K, 90 Ra, class I



<b>Dua High, H 3000 mm, single-sided</b>				
<b>Product code</b>	<b>Mounting</b>	<b>Definition</b>	<b>Net price excl. VAT</b>	<b>EUR</b>
8940-	rooted base	13 W Bridgelux V18, 350 mA		<b>1812</b>
8941-	flanged base	13 W Bridgelux V18, 350 mA		<b>1812</b>
8946-	rooted base	19 W Bridgelux V18, 500 mA		<b>1812</b>
8947-	flanged base	19 W Bridgelux V18, 500 mA		<b>1812</b>

<b>Dua High, H 3000 mm, double-sided</b>				
<b>Product code</b>	<b>Mounting</b>	<b>Definition</b>	<b>Net price excl. VAT</b>	<b>EUR</b>
8942-	rooted base	13 W Bridgelux V18, 350 mA		<b>1812</b>
8943-	flanged base	13 W Bridgelux V18, 350 mA		<b>1812</b>
8948-	rooted base	19 W Bridgelux V18, 500 mA		<b>1812</b>
8949-	flanged base	19 W Bridgelux V18, 500 mA		<b>1812</b>

Select colour and colour temperature in the table below and construct the order code as shown below.							
<b>Colour</b>	<b>Price</b>	<b>Colour temperature</b>	<b>Price</b>	<b>Dimming</b>	<b>Price</b>	<b>Protection class</b>	<b>Price</b>
01 = raw anodized	<b>0</b>	927 = 2700 K, 90 Ra	<b>0</b>	D = DALI-2	<b>20</b>	empty = class II	<b>0</b>
4 = graphite grey	<b>0</b>	930 = 3000 K, 90 Ra	<b>0</b>	E = programmable	<b>47</b>	J = class I	<b>0</b>
9 = silver grey	<b>0</b>	940 = 4000 K, 90 Ra	<b>0</b>				
17 = corten brown	<b>0</b>					<b>Surge protection</b>	
66 = noir 900	<b>0</b>					X = 10 kV	<b>54</b>
Other RAL colours	<b>134</b>						

**Example Order code:** 8942-66830 = Dua High double, rooted base, noir 900, 3000 K, 80 Ra

## TEMA BOLLARD



<b>H 1000 mm, LED</b>				
<b>Product code</b>	<b>Mounting</b>	<b>Definition</b>	<b>Net price excl. VAT</b>	<b>EUR</b>
7886-	rooted base w. cross bars	8 W Bridgelux Vero 10, 250 mA		<b>810</b>
7860-	rooted base for concrete	8 W Bridgelux Vero 10, 250 mA		<b>810</b>
7871-	flanged base	8 W Bridgelux Vero 10, 250 mA		<b>839</b>
7887-	rooted base w. cross bars	12 W Bridgelux Vero 10, 350 mA		<b>810</b>
7862-	rooted base for concrete	12 W Bridgelux Vero 10, 350 mA		<b>810</b>
7872-	flanged base	12 W Bridgelux Vero 10, 350 mA		<b>839</b>
7888-	rooted base w. cross bars	16 W Bridgelux Vero 10, 500 mA		<b>810</b>
7863-	rooted base for concrete	16 W Bridgelux Vero 10, 500 mA		<b>810</b>
7873-	flanged base	16 W Bridgelux Vero 10, 500 mA		<b>839</b>

Select colour and colour temperature in the table below and construct the order code as shown below.							
<b>Colour</b>	<b>Price</b>	<b>Colour temperature</b>	<b>Price</b>	<b>Dimming</b>	<b>Price</b>	<b>Protection class</b>	<b>Price</b>
9 = galvanised	<b>0</b>	927 = 2700 K, 90 Ra	<b>0</b>	V = 1-10 V	<b>10</b>	empty = class I	<b>0</b>
RAL colours	<b>121</b>	930 = 3000 K, 90 Ra	<b>0</b>	D = DALI	<b>20</b>	K = class II	<b>155</b>
		940 = 4000 K, 90 Ra	<b>0</b>	E = programmable	<b>27</b>		
				DE = progr. + DALI-2	<b>40</b>		

**Example order code:** 7887-9930 = Tema Bollard, rooted base, galvanised, 12 W LED, 3000 K, 90 Ra, class I

<b>H 1000 mm, E27</b>				
<b>Product code</b>	<b>Mounting</b>	<b>Definition</b>	<b>Net price excl. VAT</b>	<b>EUR</b>
7061-	rooted base w. cross bars	max 52 W E27, max L/Ø: 140/56 mm		<b>719</b>
7062-	rooted base for concrete	max 52 W E27, max L/Ø: 140/56 mm		<b>719</b>
7064-	flanged base	max 52 W E27, max L/Ø: 140/56 mm		<b>748</b>

Select colour in the table below and construct the order code as shown below.				
<b>Colour</b>	<b>Price</b>	<b>Protection class</b>	<b>Price</b>	
9 = galvanised	<b>0</b>	empty = class I	<b>0</b>	
RAL colours	<b>121</b>	K = class II	<b>155</b>	

**Example order code:** 7061-9 = Tema Bollard, rooted base, galvanised, E27, class I

<b>Extra</b>			
<b>Product code</b>	<b>Type</b>	<b>Net price excl. VAT</b>	<b>EUR</b>
70620	Preparation for socket outlet		<b>107</b>

**PHAROS**

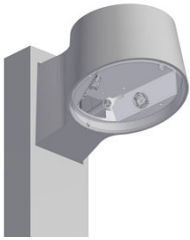


<b>H 850 mm, E27</b>			
<b>Product code</b>	<b>Definition</b>	<b>Net price excl. VAT</b>	<b>EUR</b>
7009-	E27, max 77 W, max length 170 mm, max diameter 48 mm		<b>1128</b>

Select finish in the table below.			
<b>Finish/material</b>	<b>Price</b>		
8 = copper	<b>On request</b>		
9 = galvanised	<b>0</b>		
<b>Example Order code:</b> 7009-9 = Pharos galvanised, E27			

<b>Extras</b>			
<b>Product code</b>	<b>Type</b>	<b>Net price excl. VAT</b>	<b>EUR</b>
70193	Rooted base		<b>175</b>
70194	Base for concrete		<b>175</b>

**NYX 190**



Ø 190 mm, LED, for bollard mounting		
Product code	Definition	Net price excl. VAT EUR
6889-	6 W Bridgelux V6, 250 mA	302
6841-	8 W Bridgelux V6, 350 mA	302
6842-	11 W Bridgelux V6, 500 mA	302
6888-	16 W Bridgelux V6, 700 mA	302

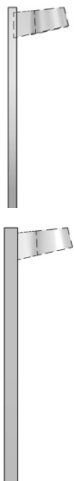
Select colour, colour temperature, etc. in the table below and construct the order code as shown below.

Colour	Price	Colour temperature	Price	Dimming	Price	Protection class	Price
01 = raw anodized	0	927 = 2700 K, 90 Ra	0	empty = no dimming	0	empty = class I	0
3 = black	0	930 = 3000 K, 90 Ra	0	V = 1-10 V	10	K = class II	13
4 = graphite grey	0	940 = 4000 K, 90 Ra		D = DALI	20		
9 = silver grey	0			E = programmable	27		
17 = corten brown	0						
66 = noir 900	0						
Other RAL colours	40						
<b>Corrosion coating</b>			<b>Price</b>				
C5 = C5 coating			81				

Add C5 after the colour code. Example: 6841-9C5927

**Example Order code:** 6841-66930 = Nyx 190, 8 W LED for bollard, noir 900, 3000K 90 Ra, class I

**NYX BOLLARD**



Nyx Bollard 1000		
Product code	Aluminium, height: 1000 mm	Net price excl. VAT EUR
7021-	rooted base	321
7022-	flanged base	367

Nyx Bollard 1200 with door for fuse box		
Product code	Aluminium, height: 1200 mm	Net price excl. VAT EUR
7023-	rooted base	549
7024-	flanged base	596

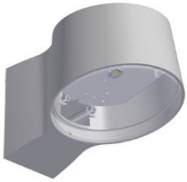
Select colour in the table below and construct the order code as shown below.

Colour	Price	Protection class	Price	Class II in bollards with fuse box only.
01 = raw anodized	0	empty = class I	0	
3 = black	0	K = class II	0	
4 = graphite grey	0			
9 = silver grey	0			
17 = corten brown	0			
66 = noir 900	0			
Other RAL colours	121			
<b>Corrosion coating</b>			<b>Price</b>	
C5 = C5 coating			81	

Add C5 after the colour code. Example: 7023-9C5

**Example Order code:** 7023-9K = Nyx Bollard 1200 for embedment, silver grey, class II

The prices quoted are without fitting. Please order Nyx 190 separately.



<b>Ø 190 mm, LED, for wall mounting</b>		
Product code	Definition	Net price excl. VAT EUR
6877-	6 W Bridgelux V8, 250 mA	214
6843-	8 W Bridgelux V8, 350 mA	214
6844-	11 W Bridgelux V8, 500 mA	214

Select colour, colour temperature, etc. in the table below and construct the order code as shown below.

Colour	Price	Colour temperature	Price	Dimming	Price	Protection class	Price
01 = raw anodized	0	927 = 2700 K, 90 Ra	0	empty = no dimming	0	empty = class I	0
3 = black	0	930 = 3000 K, 90 Ra	0	V = 1-10 V	10	K = class II	13
4 = graphite grey	0	940 = 4000 K, 90 Ra	0	D = DALI	20		
9 = silver grey	0			E = programmable	27		
17 = corten brown	0						
66 = noir 900	0						
Other RAL colours	40						
<b>Corrosion coating</b>			<b>Price</b>				
C5 = C5 coating			81				

Add C5 after the colour code. Example: 6877-9C5927

**Example Order code:** 6843-4930D = Nyx 190 12 W LED, graphite grey, 3000K 90 Ra, Dali, class I

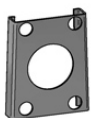


<b>Ø 190 mm, E27 version</b>		
Product code	Definition	Net price excl. VAT EUR
6022-	max 57 W, max length 130 mm, max diameter 58 mm	199
1100-2	Philips Core Pro LED, 9 W, 2700 K, 80 Ra, 15,000 service hours	6
1100-3	Philips Core Pro LED, 9 W, 3000 K, 80 Ra, 15,000 service hours	6
1100-8	Philips Core Pro LED, 11 W, 2700 K, 80 Ra, 15,000 service hours	6
1100-7	Philips Core Pro LED, 13 W, 3000 K, 80 Ra, 15,000 service hours	6
<b>We grant no discount on the lamps.</b>		

Colour	Price	Protection class	Price
01 = raw anodized	0	empty = class I	0
3 = black	0	K = class II	13
4 = graphite grey	0		
9 = silver grey	0		
17 = corten brown	0		
66 = noir 900	0		
Other RAL colours	40		
<b>Corrosion coating</b>		<b>Price</b>	
C5 = C5 coating		81	

Add C5 after the colour code. Example: 6022-9C5

**Example Order code:** 6022-9 = Nyx 190 E27, silver grey, class I



<b>Base for visible cables</b>		
Product code	Definition	Net price excl. VAT EUR
1711-	Base for cable entry on wall	27
<b>Colour</b>	<b>Price</b>	
3 = black	0	
4 = graphite grey	0	
9 = silver grey	0	
17 = corten brown	0	
66 = noir 900	0	

**NYX 330 WALL**



Ø 330 mm, LED Comfort with programmable driver		
Product code	Definition	Net price excl. VAT EUR
6990-	LED Comfort, programmable	657

Select colour, colour temperature, etc. in the table below and construct the order code as shown below.

Colour	Price	Colour temperature	Price	Screen type	Price	Dimming	Price
01 = raw anodized	0	827 = 2700 K, 80 Ra	0	empty = frosted screen	0	empty = programme	0
3 = black	0	830 = 3000 K, 80 Ra	0	O = opal screen	0	D = DALI-2	0
4 = graphite grey	0	840 = 4000 K, 80 Ra	0			F = LineSwitch	0
9 = silver grey	0						
17 = corten brown	0						
66 = noir 900	0						
Other RAL colours	67						

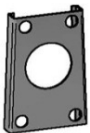
Protection class	Price
empty = class I	0
K = class II	13

Corrosion coating	Price
C5 = C5 coating	81

Add C5 after the colour code. Example: 6990-9C5827

**Example Order code:** 6990-9830 = Nyx 330 Comfort, silver grey, 3000K 80 Ra, class I

See lumen packages in the Nyx specs at [focus-lighting.dk](http://focus-lighting.dk)



Base for visible cables		
Product code		Net price excl. VAT EUR
1721-	Base for cable entry on wall	27

Add one of the colour codes below to the product code.

Colour	Price
3 = black	0
4 = graphite grey	0
9 = silver grey	0
17 = corten brown	0
66 = noir 900	0

## QUARTO INTERIOR



270 mm, LED			
Product code	Definition	Net price excl. VAT	EUR
4802-	6 W Bridgelux V8, 250 mA		191
4803-	8 W Bridgelux V8, 350 mA		191
4804-	11 W Bridgelux V8, 500 mA		191

Select colour, colour temperature, etc. in the table below and construct the order code as shown below.							
Colour	Price	Colour temperature	Price	Dimming	Price	Protection class	Price
1 = white	0	927 = 2700 K, 90 Ra	0	V = 1-10 V	10	empty = class I	0
3 = black	0	930 = 3000 K, 90 Ra	0	D = DALI	20	K = class II	13
4 = graphite grey	0	940 = 4000 K, 90 Ra	0	S = switch	20		
5 = polished nickel	94			R = bluetooth sensor	81		
6 = polished brass	120						
8 = polished copper	120						
Other RAL colours	40						
<b>Example Order code:</b> 4803-8927V = Quarto 270 interior, copper, 9 W LED, 2700 K, 90 Ra, 1-10 V dimming, cl I							

270 mm, E27 LED			
Product code	Definition	Net price excl. VAT	EUR
4001-	max 57 W, max length 110 mm, max diameter 56 mm		120
1100-2	Philips Core Pro LED, 9 W, 2700 K, 80 Ra, 15,000 service hours		6
1100-3	Philips Core Pro LED, 9 W, 3000 K, 80 Ra, 15,000 service hours		6
1100-8	Philips Core Pro LED, 11 W, 2700 K, 80 Ra, 15,000 service hours		6
1100-7	Philips Core Pro LED, 13 W, 3000 K, 80 Ra, 15,000 service hours		6
1100-4	Philips Core Pro LED, 15 W, 2700 K, 80 Ra, 15,000 service hours		6
1100-6	A60 Deco Aurora LED dimmable, 7.5 W, 2700 K, 80 Ra, 20,000 service hours		11
<b>We grant no discount on the lamps.</b>			

Select colour in the table below and construct the order code as shown below.		
Colour	Price	
1 = white	0	
3 = black	0	
4 = graphite grey	0	
5 = polished nickel	94	
6 = polished brass	120	
8 = polished copper	120	
Other RAL colours	40	
<b>Example Order code:</b> 4001-3 = Quarto 270 interior, black, E27		

## QUARTO EXTERIOR



270 mm, LED			
Product code	Definition	Net price excl. VAT	EUR
6807-	6 W Bridgelux V8, 250 mA		222
6803-	8 W Bridgelux V8, 350 mA		222
6804-	11 W Bridgelux V8, 500 mA		222

Select colour, colour temperature, etc. in the table below and construct the order code as shown below.							
Colour	Price	Colour temperature	Price	Dimming	Price	Protection class	Price
1 = white	20	927 = 2700 K, 90 Ra	0	V = 1-10 V	10	empty = class I	0
3 = black	20	930 = 3000 K, 90 Ra	0	D = DALI	20	K = class II	13
4 = graphite grey	20	940 = 4000 K, 90 Ra	0	R = bluetooth sensor	81		
6 = polished brass	121						
8 = polished copper	121						
9 = galvanised	0						
17 = corten brown	20						
66 = noir 900	20						
Other RAL colours	40						

**Example Order code:** 6804-8930 = Quarto 270 exterior, copper, 12 W LED, 3000 K, 90 Ra, class I

270 mm, E27 LED			
Product code	Definition	Net price excl. VAT	EUR
6001-	max 57 W, max length 110 mm, max diameter 56 mm		160
1100-2	Philips Core Pro LED, 9 W, 2700 K, 80 Ra, 15,000 service hours		6
1100-3	Philips Core Pro LED, 9 W, 3000 K, 80 Ra, 15,000 service hours		6
1100-8	Philips Core Pro LED, 11 W, 2700 K, 80 Ra, 15,000 service hours		6
1100-7	Philips Core Pro LED, 13 W, 3000 K, 80 Ra, 15,000 service hours		6
1100-4	Philips Core Pro LED, 15 W, 2700 K, 80 Ra, 15,000 service hours		6
1100-6	A60 Deco Aurora LED dimmable, 7.5 W, 2700 K, 80 Ra, 20,000 service hours		11
<b>We grant no discount on the lamps.</b>			

Select colour in the table above and construct the order code as shown below.	
<b>Example Order code:</b> 6001-3 = Quarto 270 exterior, black RAL 9005, E27, class I	

## BOLLARD Q



H 850 mm - single-sided (for Quarto 270)			
Product code	Mounting	Net price excl. VAT	EUR
7006-	rooted base		427
7007-	flanged base		489

Select colour in the table below and construct the order code as shown below.		
Colour	Price	
8 = copper	On request	
9 = galvanised	0	
Other RAL colours	120	

**Example Order code:** 7006-9 = Bollard Q for embedment, galvanised

**QUARTO 380**



<b>380 mm, LED</b>			
<b>Product code</b>	<b>Definition</b>	<b>Net price excl. VAT</b>	<b>EUR</b>
6808-	9 W Bridgelux V8, 350 mA		<b>398</b>
6809-	12 W Bridgelux V8, 500 mA		<b>398</b>
6810-	17 W Bridgelux V8, 700 mA		<b>398</b>

Select colour, colour temperature, etc. in the table below and construct the order code as shown below.

<b>Colour</b>	<b>Price</b>	<b>Colour temperature</b>	<b>Price</b>	<b>Dimming</b>	<b>Price</b>	<b>Protection class</b>	<b>Price</b>
1 = white	<b>26</b>	927 = 2700 K, 90 Ra	<b>0</b>	V = 1-10 V	<b>10</b>	empty = class I	<b>0</b>
3 = black	<b>26</b>	930 = 3000 K, 90 Ra	<b>0</b>	D = DALI	<b>20</b>	K = class II	<b>13</b>
4 = graphite grey	<b>26</b>	940 = 4000 K, 90 Ra	<b>0</b>	R = bluetooth sensor	<b>81</b>		
6 = polished brass	<b>147</b>						
8 = polished copper	<b>147</b>						
9 = galvanised	<b>0</b>						
17 = corten brown	<b>26</b>						
66 = noir 900	<b>26</b>						
Other RAL colours	<b>40</b>						

**Example Order code:** 6810-9930 = Quarto 380, galvanised, 17 W LED, 3000 K, 90 Ra, class I

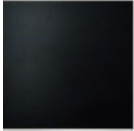
<b>380 mm, E27 versions</b>			
<b>Product code</b>	<b>Definition</b>	<b>Net price excl. VAT</b>	<b>EUR</b>
6004-	max 116 W, max length 145 mm		<b>352</b>
1100-2	Philips Core Pro LED, 9 W, 2700 K, 80 Ra, 15,000 service hours		<b>6</b>
1100-3	Philips Core Pro LED, 9 W, 3000 K, 80 Ra, 15,000 service hours		<b>6</b>
1100-8	Philips Core Pro LED, 11 W, 2700 K, 80 Ra, 15,000 service hours		<b>6</b>
1100-7	Philips Core Pro LED, 13 W, 3000 K, 80 Ra, 15,000 service hours		<b>6</b>
1100-4	Philips Core Pro LED, 15 W, 2700 K, 80 Ra, 15,000 service hours		<b>6</b>
1100-6	A60 Deco Aurora LED dimmable, 7.5 W, 2700 K, 80 Ra, 20,000 service hours		<b>11</b>
<b>We grant no discount on the lamps.</b>			

Select colour in the table below and construct the order code as shown below.

<b>Farbe</b>	<b>Preis</b>
1 = white	<b>26</b>
3 = black	<b>26</b>
4 = graphite grey	<b>26</b>
6 = polished brass	<b>147</b>
8 = polished copper	<b>147</b>
9 = galvanised	<b>0</b>
17 = corten brown	<b>26</b>
66 = noir 900	<b>26</b>
Other RAL colours	<b>40</b>

**Example Order code:** 6004-66 = Quarto 380, noir 900, E27, class I

## SQUARE 250 INTERIOR



<b>250 mm, LED</b>			
<b>Product code</b>	<b>Definition</b>	<b>Net price excl. VAT</b>	<b>EUR</b>
4823-	10 W Bridgelux, 250 mA		<b>297</b>
4820-	15 W Bridgelux, 350 mA		<b>297</b>
4822-	8 W Bridgelux, 250 mA, downwards only		<b>297</b>
4821-	12 W Bridgelux, 350 mA, downwards only		<b>297</b>

Select colour, colour temperature, etc. in the table below and construct the order code as shown below.							
<b>Colour</b>	<b>Price</b>	<b>Colour temperature</b>	<b>Price</b>	<b>Dimming</b>	<b>Price</b>	<b>Protection class</b>	<b>Price</b>
1 = white	<b>0</b>	927 = 2700 K, 90 Ra	<b>0</b>	V = 1-10 V	<b>10</b>	empty = class I	<b>0</b>
3 = black	<b>0</b>	930 = 3000 K, 90 Ra	<b>0</b>	D = DALI	<b>20</b>	K = class II	<b>13</b>
4 = graphite grey	<b>0</b>	940 = 4000 K, 90 Ra	<b>0</b>	S = switch	<b>20</b>		
Other RAL colours	<b>41</b>			R = bluetooth sensor	<b>81</b>		
<b>Example Product code:</b> 4820-3927V = Square 250 interior, black, 15 W LED, 2700 K, 90 Ra, 1-10 V dimming							

<b>250 mm, E27 LED</b>			
<b>Product code</b>	<b>Definition</b>	<b>Net price excl. VAT</b>	<b>EUR</b>
4009-	max 30 W, E27		<b>183</b>
4012-	max 30 W, E27, downwards only		<b>183</b>
1100-2	Philips Core Pro LED, 9 W, 2700 K, 80 Ra, 15,000 service hours		<b>6</b>
1100-3	Philips Core Pro LED, 9 W, 3000 K, 80 Ra, 15,000 service hours		<b>6</b>
1100-8	Philips Core Pro LED, 11 W, 2700 K, 80 Ra, 15,000 service hours		<b>6</b>
1100-7	Philips Core Pro LED, 13 W, 3000 K, 80 Ra, 15,000 service hours		<b>6</b>
1100-4	Philips Core Pro LED, 15 W, 2700 K, 80 Ra, 15,000 service hours		<b>6</b>
1100-6	A60 Deco Aurora LED dimmable, 7.5 W, 2700 K, 80 Ra, 20,000 service hours		<b>11</b>
<b>We grant no discount on the lamps.</b>			

Select colour in the table below and construct the order code as shown below.		
<b>Colour</b>	<b>Price</b>	
1 = white	<b>0</b>	
3 = black	<b>0</b>	
4 = graphite grey	<b>0</b>	
Other RAL colours	<b>41</b>	
<b>Example Product code:</b> 4009-1 = Square 250 interior, white, E27		

## SQUARE 270 INTERIOR



270 mm, LED			
Product code	Definition	Net price excl. VAT	EUR
4824-	15 W Bridgelux, 350mA		328
4825-	12 W Bridgelux, 350mA, downwards only		328

Select colour, colour temperature, etc. in the table below and construct the order code as shown below.							
Colour	Price	Colour temperature	Price	Dimming	Price	Protection class	Price
1 = white	0	927 = 2700 K, 90 Ra	0	V = 1-10 V	10	empty = class I	0
3 = black	0	930 = 3000 K, 90 Ra	0	D = DALI	20	K = class II	13
4 = graphite grey	0	940 = 4000 K, 90 Ra	0	S = switch	20		
Other RAL colours	41			R = bluetooth sensor	81		
<b>Example Product code:</b> 4824-1930 = Square 270 interior, white 15 W LED, 3000 K, 90 Ra, class I							

270 mm, E27 LED			
Product code	Definition	Net price excl. VAT	EUR
4010-	max 30 W, E27		199
4013-	max 30 W, E27, downwards only		199
1100-2	Philips Core Pro LED, 9 W, 2700 K, 80 Ra, 15,000 service hours		6
1100-3	Philips Core Pro LED, 9 W, 3000 K, 80 Ra, 15,000 service hours		6
1100-8	Philips Core Pro LED, 11 W, 2700 K, 80 Ra, 15,000 service hours		6
1100-7	Philips Core Pro LED, 13 W, 3000 K, 80 Ra, 15,000 service hours		6
1100-4	Philips Core Pro LED, 15 W, 2700 K, 80 Ra, 15,000 service hours		6
1100-6	A60 Deco Aurora LED dimmable, 7.5 W, 2700 K, 80 Ra, 20,000 service hours		11
<b>We grant no discount on the lamps.</b>			

Select colour, dimming, etc. in the table below and construct the order code as shown below.		
Colour	Price	
1 = white	0	
3 = black	0	
4 = graphite grey	0	
Other RAL colours	41	
<b>Example Product code:</b> 4010-1 = Square 270 interior, white, E27, class I		

## Digits in Square 250 and 270

Laser cutting	Price	
empty = no cutting	0	
C = laser cutting	81	
In case of laser cutting in the front, please add a "C" to the product code. Applies to all variants.		
Please take contact in case of pictogrammes.		

## SQUARE 190 EXTERIOR

19

190 mm, LED			
Product code	Definition	Net price excl. VAT	EUR
6920-	8 W Bridgelux, 250 mA		274
6921-	11 W Bridgelux, 350 mA		274
6922-	6 W Bridgelux, 250 mA, downwards only		274
6923-	8 W Bridgelux, 350 mA, downwards only		274

Select colour, colour temperature, etc. in the table below and construct the order code as shown below.

Colour	Price	Colour temperature	Price	Dimming	Price	Protection class	Price
1 = white	0	927 = 2700 K, 90 Ra	0	V = 1-10 V	10	K = class II	0
3 = black	0	930 = 3000 K, 90 Ra	0	D = DALI	20		
4 = graphite grey	0	940 = 4000 K, 90 Ra	0				
8 = brushed copper	132						
17 = corten brown	0						
66 = noir 900	0						
Other RAL colours	41						

**Example Product code:** 6920-3927D = Square 190, black, 8 W LED, 2700 K, 90 Ra, Dali, class I

## SQUARE 250 EXTERIOR

35

250 mm, LED			
Product code	Definition	Net price excl. VAT	EUR
6828-	10 W Bridgelux, 250 mA		313
6820-	15 W Bridgelux, 350 mA		313
6829-	8 W Bridgelux, 250 mA, downwards only		313
6826-	12 W Bridgelux, 350 mA, downwards only		313

Select colour, colour temperature, etc. in the table below and construct the order code as shown below.

Colour	Price	Colour temperature	Price	Dimming	Price	Protection class	Price
1 = white	0	927 = 2700 K, 90 Ra	0	V = 1-10 V	10	empty = class I	0
3 = black	0	930 = 3000 K, 90 Ra	0	D = DALI	20	K = class II	13
4 = graphite grey	0	940 = 4000 K, 90 Ra	0	R = bluetooth sensor	81		
8 = brushed copper	132						
9 = galvanised	23						
17 = corten brown	0						
66 = noir 900	0						
Other RAL colours	41						

**Example Product code:** 6820-3927D = Square 250, black, 15 W LED, 2700 K, 90 Ra, Dali, class I

250 mm, E27 LED			
Product code	Definition	Net price excl. VAT	EUR
6002-	max 30 W, E27		191
6006-	max 30 W, E27, downwards only		191
1100-2	Philips Core Pro LED, 9 W, 2700 K, 80 Ra, 15,000 service hours		6
1100-3	Philips Core Pro LED, 9 W, 3000 K, 80 Ra, 15,000 service hours		6
1100-8	Philips Core Pro LED, 11 W, 2700 K, 80 Ra, 15,000 service hours		6
1100-7	Philips Core Pro LED, 13 W, 3000 K, 80 Ra, 15,000 service hours		6
1100-4	Philips Core Pro LED, 15 W, 2700 K, 80 Ra, 15,000 service hours		6
	<b>We grant no discount on the lamps.</b>		

Select colour in the table above and construct the order code as shown below.

**Example Product code:** 6002-1 = Square 250, white, E27, class I

## SQUARE BOLLARD



<b>H 1100 mm - without fitting</b>			
<b>Product code</b>	<b>Mounting</b>	<b>Net price excl. VAT</b>	<b>EUR</b>
7016-	rooted base		<b>610</b>
7017-	flanged base		<b>672</b>
Select colour in the table below.			
<b>Extra for colour</b>	<b>Price</b>		
3 = black	<b>41</b>		
4 = graphite grey	<b>41</b>		
9 = galvanised	<b>0</b>		
66 = noir 900	<b>41</b>		
Other RAL colours	<b>121</b>		
<b>Example Product code:</b> 7016-4 = Square Bollard, rooted base, graphite grey			

## SQUARE 270 EXTERIOR



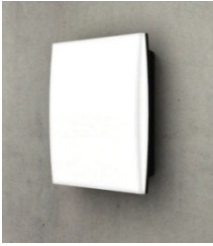
<b>270 mm, LED</b>			
<b>Product code</b>	<b>Definition</b>	<b>Net price excl. VAT</b>	<b>EUR</b>
6824-	15 W Bridgelux, 350mA		<b>342</b>
6827-	20 W Bridgelux, 500mA		<b>342</b>
6825-	12 W Bridgelux, 350mA, downwards only		<b>342</b>

Select colour, colour temperature, etc. in the table below and construct the order code as shown below.							
<b>Colour</b>	<b>Price</b>	<b>Colour temperature</b>	<b>Price</b>	<b>Dimming</b>	<b>Price</b>	<b>Protection class</b>	<b>Price</b>
1 = white	<b>0</b>	927 = 2700 K, 90 Ra	<b>0</b>	V = 1-10 V	<b>10</b>	empty = class I	<b>0</b>
3 = black	<b>0</b>	930 = 3000 K, 90 Ra	<b>0</b>	D = DALI	<b>20</b>	K = class II	<b>13</b>
4 = graphite grey	<b>0</b>	940 = 4000 K, 90 Ra	<b>0</b>	R = bluetooth sensor	<b>81</b>		
8 = brushed copper	<b>245</b>						
9 = galvanised	<b>26</b>						
17 = corten brown	<b>0</b>						
66 = noir 900	<b>0</b>						
Other RAL colours	<b>41</b>						
<b>Example Product code:</b> 6822-8930 = Square 270, copper, 15 W LED, 3000 K, 90 Ra, class I							

## Digits in Square 190, 250 and 270

<b>Laser cutting</b>	<b>Price</b>
empty = no cutting	<b>0</b>
C = laser cutting	<b>81</b>
In case of laser cutting in the front, please add a "C" to the product code. Applies to all variants.	
Please take contact in case of pictogrammes.	

STOA



320 X 320 mm, LED			
Product code	Definition	Net price excl. VAT	EUR
6830-	10 W 350 mA		<b>248</b>
6831-	14 W 500 mA		<b>248</b>

Select colour, screen type, colour temperature, etc. in the table below and construct the order code as shown below.

Colour	Price	Screen type	Price	Colour temperature	Price	Dimming	Price
01 = raw anodized	<b>0</b>	A = acrylic glass	<b>0</b>	927 = 2700 K, 90 Ra	<b>0</b>	empty = no dimm.	<b>0</b>
1 = white	<b>0</b>	P = polycarbonate	<b>0</b>	930 = 3000 K, 90 Ra	<b>0</b>	V = 1-10 V	<b>10</b>
3 = black	<b>0</b>			940 = 4000 K, 90 Ra	<b>0</b>	D = DALI	<b>20</b>
Other RAL colours	<b>54</b>					S = Switch	<b>20</b>

**Example Order code:** 6830-1A830V = Stoa LED 10 W, white, acrylic screen, 3000 K 90 Ra, 1-10 V dimming, cl. I

TEMA BUEN



Ø 280 mm, LED, downwards			
Product code	Definition	Net price excl. VAT	EUR
6872-	1 x Bridgelux V8, 6 W, 250 mA		274
6870-	1 x Bridgelux V8, 8 W, 350 mA		274
6871-	1 x Bridgelux V8, 11 W, 500 mA		274

Ø 280 mm, LED, up and downwards			
Product code	Definition	Net price excl. VAT	EUR
6874-	2 x Bridgelux V8, 10 W, 250 mA		290
6875-	2 x Bridgelux V8, 14 W, 350 mA		290
6876-	2 x Bridgelux V8, 20 W, 500 mA		290

Select colour and colour temperature in the table below and construct the order code as shown below.

Colour	Price	Colour temperature	Price	Dimming	Price	Protection class	Price
9 = galvanised	0	927 = 2700 K, 90 Ra	0	V = 1-10 V	10	empty = class I	0
RAL colours	67	930 = 3000 K, 90 Ra	0	D = DALI	20	K = class II	20
		940 = 4000 K, 90 Ra	0	E = programmable	27		
Shade	Price						
empty = clear	0						
O = opal white	0						
H = top cover	13						

**Example Order code:** 6870-9930H = Tema Buen galvanised, 8 W LED, 3000 K, 90 Ra, clear shade with top cover

Ø 280 mm, E27			
Product code	Definition	Net price excl. VAT	EUR
6071-	E27, max 52 W, max length 116 mm, max diameter 60 mm		214
1100-2	Philips Core Pro LED, 9 W, 2700 K, 80 Ra, 15,000 service hours		6
1100-3	Philips Core Pro LED, 9 W, 3000 K, 80 Ra, 15,000 service hours		6
1100-8	Philips Core Pro LED, 11 W, 2700 K, 80 Ra, 15,000 service hours		6
1100-7	Philips Core Pro LED, 13 W, 3000 K, 80 Ra, 15,000 service hours		6
1100-4	Philips Core Pro LED, 15 W, 2700 K, 80 Ra, 15,000 service hours		6
1100-6	A60 Deco Aurora LED dimmable, 7.5 W, 2700 K, 80 Ra, 20,000 service hours		11
<b>We grant no discount on the lamps.</b>			

Select colour and shade in the table below.

Colour	Price	Shade	Price
9 = galvanised	0	empty = clear	0
RAL colours	67	H = top cover	13
		O = opal white	0

**Example Order code:** 6071-9 = Tema Buen galvanised, E27, clear shade

## YOYO SURFACE MOUNTED



Ø 225 mm, LED		
Product code	Definition	Net price excl. VAT EUR
2922-	7 W Edge Lit, 350 mA	273
2919-	10 W Edge Lit, 500 mA	273
2918-	14 W Edge Lit, 700 mA	273
2923-	7 W Edge Lit, 350 mA, with uplight	273
2921-	10 W Edge Lit, 500 mA, with uplight	273
2920-	14 W Edge Lit, 700 mA, with uplight	273

Select colour, colour temperature, etc. in the table below and construct the order code as shown below.

Colour	Price	Screen type	Price	Colour temperature	Price	Dimming	Price
0 = raw untreated	0	empty = acrylate	0	927 = 2700 K, 90 Ra	0	empty = no dimm.	0
01 = raw anodized	0	M = micro prismatic	0	930 = 3000 K, 90 Ra	0	D = DALI-2	20
1 = white RAL 9010	0			940 = 4000 K, 90 Ra	0	T = Triac*	10
3 = black RAL 9005	0					* 350-500 mA only	
19 = alu-grey RAL 9006	0						
102 = yellow RAL 1032	0						
103 = orange RAL 2003	0						
104 = blue-green RAL 6004	0						
105 = squirrel grey RAL 7000	0						
Other RAL colours	27						

**Example Item No.:** 2922-1927 = Yoyo 225, 7 W, white, 2700 K 90 Ra



Ø 350 mm, LED		
Product code	Definition	Net price excl. VAT EUR
2911-	16 W Edge Lit, 500 mA	352
2910-	23 W Edge Lit, 700 mA	352
2913-	16 W Edge Lit, 500 mA, with uplight	352
2912-	23 W Edge Lit, 700 mA, with uplight	352

Select colour, colour temperature, etc. in the table below and construct the order code as shown below.

Colour	Price	Screen type	Price	Colour temperature	Price	Dimming	Price
0 = raw untreated	0	empty = acrylate	0	927 = 2700 K, 90 Ra	0	empty = no dimm.	0
01 = raw anodized	0	M = micro prismatic	0	930 = 3000 K, 90 Ra	0	D = DALI-2	20
1 = white RAL 9010	0			940 = 4000 K, 90 Ra	0	R = bluetooth sens	81
3 = black RAL 9005	0			9WD* = TW, Dali-2, 90	74	T = Triac	10
19 = alu-grey RAL 9006	0			* Longer lead times		V = 1-10 V	10
102 = yellow RAL 1032	0						
103 = orange RAL 2003	0						
104 = blue-green RAL 6004	0						
105 = squirrel grey RAL 7000	0						
Other RAL colours	27						

**Example Item No.:** 2913-3M927 = Yoyo 350 w. uplight, 16 W, black, shade micro prismatic, 2700 K 90 Ra

**YOYO SURFACE MOUNTED**



Ø 535 mm, LED		
Product code	Definition	Net price excl. VAT EUR
2914-	26 W Edge Lit, 500 mA	512
2915-	36 W Edge Lit, 700 mA	512
2916-	26 W Edge Lit, 500 mA, with uplight	512
2917-	36 W Edge Lit, 700 mA, with uplight	512

Select colour, colour temperature, etc. in the table below and construct the order code as shown below.

Colour	Price	Screen type	Price	Colour temperature	Price	Dimming	Price
0 = raw untreated	0	empty = acrylate	0	927 = 2700 K, 90 Ra	0	empty = no dimm.	0
01 = raw anodized	0	M = micro prismatic	0	930 = 3000 K, 90 Ra	0	D = DALI-2	20
1 = white RAL 9010	0			940 = 4000 K, 90 Ra	0	R = bluetooth sens	81
3 = black RAL 9005	0			9WD* = TW, Dali-2, 90	94	T = Triac (350 mA)	10
19 = alu-grey RAL 9006	0			* Longer lead times		V = 1-10 V	10
102 = yellow RAL 1032	0						
103 = orange RAL 2003	0						
104 = blue-green RAL 6004	0						
105 = squirrel grey RAL 7000	0						
Other RAL colours	27						

**Example Item No.:** 2915-1M930D = Yoyo 535, 36 W, white, shade micro prismatic, 3000 K 90 Ra, Dali-2

Extras			
Product code	Definition	Net price excl. VAT	EUR
1727-01	Kit set Yoyo 350 and 225, 3 pcs spacer tube for visible cable assembly	7	
1727-02	Kit set Yoyo 535, 4 pcs spacer tube for visible cable assembly	7	

## YOYO PENDANT



Ø 350 mm, LED			
Product code	Definition	Net price excl. VAT	EUR
1853-	16 W Edge Lit, 500 mA		501
1854-	23 W Edge Lit, 700 mA		501
1857-	16 W Edge Lit, 500 mA, with uplight		529
1858-	23 W Edge Lit, 700 mA, with uplight		529

Select colour, colour temperature, etc. in the table below and construct the order code as shown below.

Colour	Price	Screen type	Price	Colour temperature	Price	Dimming	Price
0 = raw untreated	0	empty = acrylate	0	927 = 2700 K, 90 Ra	0	empty = no dimm.	0
01 = raw anodized	0	M = micro prismatic	0	930 = 3000 K, 90 Ra	0	D = DALI-2	20
1 = white RAL 9010	0			940 = 4000 K, 90 Ra	0	R = bluetooth sens	81
3 = black RAL 9005	0			9WD* = TW, Dali-2, 90	74	T = Triac	10
19 = alu-grey RAL 9006	0			* Longer lead times		V = 1-10 V	10
102 = yellow RAL 1032	0					Colour of lead	Price
103 = orange RAL 2003	0					empty = white	0
104 = blue-green RAL 6004	0					Y = black	0
105 = squirrel grey RAL 7000	0						
Other RAL colours	40						

**Example Item No.:** 1853-1M930 = Yoyo 350 pendant, 16 W, white, shade prismatic, 2700 K 90 Ra, white lead



Ø 535 mm, LED			
Product code	Definition	Net price excl. VAT	EUR
1850-	26 W Edge Lit, 500 mA		666
1851-	36 W Edge Lit, 700 mA		666
1855-	26 W Edge Lit, 500 mA, with uplight		709
1856-	36 W Edge Lit, 700 mA, with uplight		709

Select colour, colour temperature, etc. in the table below and construct the order code as shown below.

Colour	Price	Screen type	Price	Colour temperature	Price	Dimming	Price
0 = raw untreated	0	empty = acrylate	0	927 = 2700 K, 90 Ra	0	empty = no dimm.	0
01 = raw anodized	0	M = micro prismatic	0	930 = 3000 K, 90 Ra	0	D = DALI-2	20
1 = white RAL 9010	0			940 = 4000 K, 90 Ra	0	R = bluetooth sens	81
3 = black RAL 9005	0			9WD* = TW, Dali-2, 90	94	T = Triac (350 mA)	10
19 = alu-grey RAL 9006	0			* Longer lead times		V = 1-10 V	10
102 = yellow RAL 1032	0					Colour of lead	Price
103 = orange RAL 2003	0					empty = white	0
104 = blue-green RAL 6004	0					Y = black	0
105 = squirrel grey RAL 7000	0						
Other RAL colours	40						

**Example Item No.:** 1851-3M930Y = Yoyo 535 pendant, 36 W, black, shade prismatic, 3000 K 90 Ra, black lead

Extras			
Product code	Description	Nett price excl. VAT	EUR
1720-1	Canopy with suspension fitting, white		13
1720-3	Canopy with suspension fitting, black		13

YOYO LINE



<b>Yoyo Line 1300</b>			
<b>Product code</b>	<b>Definition (Lumen-out 4000K)</b>	<b>Net price excl. VAT</b>	<b>EUR</b>
5850-	Downlight 100% (4000 lumen-out)		<b>618</b>
5851-	Downlight 100% (1500 lumen-out)		<b>618</b>
5852-	Downlight 40% / Uplight 60%, Clear top (5500 lumen-out)		<b>665</b>
5854-	Downlight 40% / Uplight 60%, Clear top (3250 lumen-out)		<b>665</b>
5856-	Downlight 40% / Uplight 60%, Opal top (5300 lumen-out)		<b>665</b>
5858-	Downlight 40% / Uplight 60%, Opal top (2500 lumen-out)		<b>665</b>

Select colour, colour temperature, etc. in the table below and construct the order code as shown below.							
<b>Colour</b>	<b>Price</b>	<b>Screen type</b>	<b>Price</b>	<b>Colour temperature</b>	<b>Price</b>	<b>Dimming</b>	<b>Price</b>
0 = raw untreated	<b>0</b>	P = Prismatic down	<b>0</b>	927 = 2700 K, 90 Ra	<b>0</b>	D = DALI-2	<b>0</b>
01 = raw anodized	<b>40</b>			930 = 3000 K, 90 Ra	<b>0</b>		
1 = white RAL 9010	<b>0</b>			940 = 4000 K, 90 Ra	<b>0</b>		
3 = black RAL 9005	<b>0</b>						
19 = alu-grey RAL 9006	<b>40</b>					<b>Colour of lead</b>	<b>Price</b>
102 = yellow RAL 1032	<b>40</b>					empty = white	<b>0</b>
103 = orange RAL 2003	<b>40</b>					Y = black	<b>0</b>
104 = blue-green RAL 6004	<b>40</b>						
105 = squirrel grey RAL 7000	<b>40</b>						
Other RAL colours	<b>67</b>						

<b>Yoyo Line 1900</b>			
<b>Product code</b>	<b>Definition (Lumen-out 4000K)</b>	<b>Net price excl. VAT</b>	<b>EUR</b>
5850-	Downlight 100% (4800 lumen-out)		<b>618</b>
5851-	Downlight 100% (2200 lumen-out)		<b>618</b>
5852-	Downlight 40% / Uplight 60%, Clear top (5900 lumen-out)		<b>665</b>
5854-	Downlight 40% / Uplight 60%, Clear top (3400 lumen-out)		<b>665</b>
5856-	Downlight 40% / Uplight 60%, Opal top (5300 lumen-out)		<b>665</b>
5858-	Downlight 40% / Uplight 60%, Opal top (3700 lumen-out)		<b>665</b>

Select colour, colour temperature, etc. in the table below and construct the order code as shown below.							
<b>Colour</b>	<b>Price</b>	<b>Screen type</b>	<b>Price</b>	<b>Colour temperature</b>	<b>Price</b>	<b>Dimming</b>	<b>Price</b>
0 = raw untreated	<b>0</b>	P = Prismatic down	<b>0</b>	927 = 2700 K, 90 Ra	<b>0</b>	D = DALI-2	<b>0</b>
01 = raw anodized	<b>40</b>			930 = 3000 K, 90 Ra	<b>0</b>		
1 = white RAL 9010	<b>0</b>			940 = 4000 K, 90 Ra	<b>0</b>		
3 = black RAL 9005	<b>0</b>						
19 = alu-grey RAL 9006	<b>40</b>					<b>Colour of lead</b>	<b>Price</b>
102 = yellow RAL 1032	<b>40</b>					empty = white	<b>0</b>
103 = orange RAL 2003	<b>40</b>					Y = black	<b>0</b>
104 = blue-green RAL 6004	<b>40</b>						
105 = squirrel grey RAL 7000	<b>40</b>						
Other RAL colours	<b>67</b>						

YOYO OUTDOOR

Yoyo Outdoor Ø 350 mm, LED			
Product code	Definition	Net price excl. VAT	EUR
6930-	11 W, 350 mA		<b>336</b>
6931-	15 W, 500 mA		<b>336</b>

Select colour, colour temperature, etc. in the table below and construct the order code as shown below.

Colour	Price	Screen type	Price	Colour temperature	Price	Dimming	Price
0 = raw untreated	<b>0</b>	blank = opal acrylic	<b>0</b>	927 = 2700 K, 90 Ra	<b>0</b>	empty = no dimm.	<b>0</b>
01 = raw anodized	<b>0</b>		<b>0</b>	930 = 3000 K, 90 Ra	<b>0</b>	D = DALI-2	<b>20</b>
1 = white RAL 9010	<b>0</b>			940 = 4000 K, 90 Ra	<b>0</b>	R = bluetooth sensor	<b>81</b>
3 = black RAL 9005	<b>27</b>					V = 1-10 V	<b>10</b>
19 = alu-grey RAL 9006	<b>27</b>						
102 = yellow RAL 1032	<b>27</b>						
103 = orange RAL 2003	<b>27</b>						
104 = blue-green RAL 600	<b>27</b>						
105 = squirrel grey RAL 70	<b>27</b>						
Other RAL colours	<b>40</b>						

PELÉE RECESSED



Ø 250 mm recessed, LED			
Product code	Definition	Net price excl. VAT	EUR
2837-	10 W LED 213, 350 mA		313
2838-	14 W LED 213, 500 mA		313

Select colour, colour temperature, etc. in the table below and construct the order code as shown below.

Colour	Price	Screen type	Price	Colour temperature	Price	Dimming	Price
0 = raw untreated	0	empty = acrylate	0	927 = 2700 K, 90 Ra	0	empty = no dimm.	0
01 = raw anodized	0	M = micro prismatic	0	930 = 3000 K, 90 Ra	0	V = 1-10 V	10
1 = white	0			940 = 4000 K, 90 Ra	0	D = DALI	20
3 = sandblasted	0			9WD = TW, Dali, 90 Ra	74		
9 = alu-grey	0						
17 = corten brown	0						
66 = noir 900	0						
Other RAL colours	40						

**Example Order code:** 2837-19WD = Pelée 250 recessed, 10 W, white, tunable white, 90 Ra, Dali

Extras			
Product code	Description	Net price excl. VAT	EUR
2832-20	Reinforcement for soft ceilings, Pelée 250		27



Ø 385 mm recessed, LED			
Product code	Definition	Net price excl. VAT	EUR
2840-	17 W LED 324, 500 mA		381
2841-	23 W LED 324, 700 mA		381
2843-	33 W LED 324, 1050 mA, incl. Dali driver		434

Select colour, colour temperature, etc. in the table below and construct the order code as shown below.

Colour	Price	Screen type	Price	Colour temperature	Price	Dimming	Price
0 = raw untreated	0	empty = acrylate	0	927 = 2700 K, 90 Ra	0	empty = no dimm.	0
01 = raw anodized	0	M = micro prismatic	0	930 = 3000 K, 90 Ra	0	V = 1-10 V	10
1 = white	0			940 = 4000 K, 90 Ra	0	D = DALI	20
3 = sandblasted	0			9WD = TW, Dali, 90 Ra	94		
9 = alu-grey	0						
17 = corten brown	0						
66 = noir 900	0						
Other RAL colours	40						

**Example Order code:** 2840-66M930D = Pelée 385 recessed, 17 W, noir 900, micro prismatic screen, 3000 K 90 Ra, Dali

Extras			
Product code	Description	Net price excl. VAT	EUR
2834-20	Reinforcement for soft ceilings, Pelée 385		27

**PELÉE SURFACE MOUNTED**



<b>Ø 250 mm surface-mounted, LED</b>			
<b>Product code</b>	<b>Definition</b>	<b>Net price excl. VAT</b>	<b>EUR</b>
2880-	10 W LED 213, 350 mA		<b>313</b>
2881-	14 W LED 213, 500 mA		<b>313</b>

Select colour, colour temperature, etc. in the table below and construct the order code as shown below.

<b>Colour</b>	<b>Price</b>	<b>Screen type</b>	<b>Price</b>	<b>Colour temperature</b>	<b>Price</b>	<b>Dimming</b>	<b>Price</b>
0 = raw untreated	0	empty = acrylate	0	927 = 2700 K, 90 Ra	0	empty = no dimm.	0
01 = raw anodized	0	M = micro prismatic	0	930 = 3000 K, 90 Ra	0	V = 1-10 V	10
1 = white	0			940 = 4000 K, 90 Ra	0	D = DALI	20
9 = alu-grey	0			9WD = TW, Dali, 90 Ra	74		
17 = corten brown	0						
66 = noir 900	0						
Other RAL colours	40						

**Example Order code:** 2880-99WD = Pelée 250 surface-mounted, 10 W, alu-grey, tunable white, Dali



<b>Ø 385 mm surface-mounted, LED</b>			
<b>Product code</b>	<b>Definition</b>	<b>Net price excl. VAT</b>	<b>EUR</b>
2886-	17 W LED 324, 500 mA		<b>381</b>
2887-	23 W LED 324, 700 mA		<b>381</b>
2888-	33 W LED 324, 1050 mA, incl. Dali driver		<b>434</b>

Select colour, colour temperature, etc. in the table below and construct the order code as shown below.

<b>Colour</b>	<b>Price</b>	<b>Screen type</b>	<b>Price</b>	<b>Colour temperature</b>	<b>Price</b>	<b>Dimming</b>	<b>Price</b>
0 = raw untreated	0	empty = acrylate	0	927 = 2700 K, 90 Ra	0	empty = no dimm.	0
01 = raw anodized	0	M = micro prismatic	0	930 = 3000 K, 90 Ra	0	V = 1-10 V	10
1 = white	0			940 = 4000 K, 90 Ra	0	D = DALI	20
9 = alu-grey	0			9WD = TW, Dali, 90 Ra	94		
17 = corten brown	0						
66 = noir 900	0						
Other RAL colours	40						

**Example Order code:** 2886-66930V = Pelée 385 surface-mounted, 17 W, noir 900, 3000 K 90 Ra, 1-10 V dimming

## PELÉE DOWNLIGHT



Ø 160 mm, LED			
Product code	Definition	Net price excl. VAT	EUR
2830-	8 W V8, 500 mA		214
2831-	11 W V8, 700 mA		214
2829-	16 W V8, 500 mA		214

Select colour, colour temperature, etc. in the table below and construct the order code as shown below.							
Colour	Price	Colour temperature	Price	Dimming	Price		
0 = raw untreated	0	927 = 2700 K, 90 Ra	0	empty = no dimm.	0		
01 = raw anodized	0	930 = 3000 K, 90 Ra	0	V = 1-10 V	10		
1 = white	0	940 = 4000 K, 90 Ra	0	D = DALI	20		
9 = alu-grey	0						
17 = corten brown	0						
66 = noir 900	0						
Other RAL colours	40						

**Example Order code:** 2831-9930V = Pelée Downlight, 17 watts, alu-grey, 3000 K 90 Ra, 1-10 V dimming

Extras			
Product code	Description	Net price excl. VAT	EUR
2830-016	Reinforcement for soft ceilings, Pelée 160		27

## PELÉE PENDANT



Ø 385 mm LED downwards			
Product code	Definition	Net price excl. VAT	EUR
1840-	17 W LED 324, 500 mA		443
1841-	23 W LED 324, 700 mA		443
1844-	33 W LED 324, 1050 mA, incl. Dali driver		496

Ø 385 mm LED up and downwards			
Product code	Definition	Net price excl. VAT	EUR
1842-	22 W LED, 500 mA		518
1843-	30 W LED, 700 mA		518
1845-	40 W LED, 950 mA, incl. Dali driver		572

Select colour, colour temperature, etc. in the table below and construct the order code as shown below.							
Colour	Price	Screen type	Price	Colour temperature	Price	Dimming	Price
0 = raw untreated	0	empty = acrylate	0	927 = 2700 K, 90 Ra	0	empty = no dimm.	0
01 = raw anodized	0	M = micro prismatic	0	930 = 3000 K, 90 Ra	0	V = 1-10 V	10
1 = white	0			940 = 4000 K, 90 Ra	0	D = DALI	20
9 = alu-grey	0			9WD = TW, Dali, 90 Ra	94		
17 = corten brown	0					Colour of lead	Price
66 = noir 900	0					empty = white	0
Other RAL colours	40					Y = black	0

**Example Order code:** 1842-9927 = Pelée pendant Uplight, 22 watts, alu-grey, 2700 K 90 Ra

Extras			
Product code	Description	Net price excl. VAT	EUR
1720-1	Canopy with suspension fitting, white		13
1720-3	Canopy with suspension fitting, black		13

**PELÉE WALL**

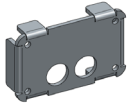


<b>L 320 mm, LED linear</b>			
<b>Product code</b>	<b>Definition</b>	<b>Net price excl. VAT</b>	<b>EUR</b>
6891-	9 W LED, 350 mA		<b>214</b>
6892-	13 W LED, 500 mA		<b>214</b>

Select colour, colour temperature, etc. in the table below and construct the order code as shown below.

<b>Colour</b>	<b>Price</b>	<b>Colour temperature</b>	<b>Price</b>	<b>Dimming</b>	<b>Price</b>	<b>Classification</b>	<b>Price</b>
0 = raw untreated	0	927 = 2700 K, 90 Ra	0	empty = no dimm.	0	empty = class I	0
01 = raw anodized	0	930 = 3000 K, 90 Ra	0	V = 1-10 V	10	K = class II	0
1 = white	0	940 = 4000 K, 90 Ra	0	D = DALI-2	20		
9 = alu-grey	0			R = bluetooth sensor	81		
17 = corten brown	0						
66 = noir 900	0						
Other RAL colours	40						

**Example Order code:** 6892-1930D = Pelée Wall, 13 W, white, 3000 K, 90 Ra, Dali-2, class I



<b>Base for visible cables</b>			
<b>Product code</b>		<b>Net price excl. VAT</b>	<b>EUR</b>
1723-	Base for cable entry on wall		<b>54</b>

Add one of the colour codes below to the product code.

<b>Colour</b>	<b>Price</b>
0 = raw untreated	0
01 = raw anodized	0
1 = white	0
4 = graphite grey	0
9 = alu-grey	0
17 = corten brown	0
66 = noir 900	0

PELÉE LINE



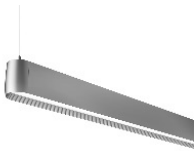
L 1200 mm, LED, Dali, downwards: 100%			
Product code	Definition	Net price excl. VAT	EUR
5109-	2000 lm		549
5101-	3000 lm		549
5102-	4000 lm		549

L 1200 mm, LED, Dali, up/down: 35/65			
Product code	Definition	Net price excl. VAT	EUR
5103-	5000 lm (1750/3250)		594
5104-	6000 lm (1800/4200)		594

L 1200 mm, LED, Dali, up/down: 50/50			
Product code	Definition	Net price excl. VAT	EUR
5105-	4000 lm (2000/2000)		594
5106-	6000 lm (3000/3000)		594

L 1200 mm, LED, Dali, up/down: 65/35			
Product code	Definition	Net price excl. VAT	EUR
5107-	5000 lm (3250/1750)		594
5108-	6000 lm (4200/1800)		594

Select colour, colour temperature etc. in the table.							
Colour	Price	Shade	Price	Colour temperature	Price	Colour of lead	Price
0 = raw untreated	0	M = mikroprismatic	0	827 = 2700 K, 80 Ra	0	empty = white	0
01 = raw anodized	0			930 = 3000 K, 90 Ra	0	Y = black	0
1 = white	0			940 = 4000 K, 90 Ra	0		
9 = alu-grey	0						
17 = corten brown	0						
66 = noir 900	0						
Other RAL colours	134						
<b>Example order code:</b> 5103-66M930 = Pelée Line 1200, 35/65, 4000 lm, noir 900, prismatic shade, 3000 K							



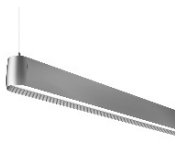
<b>L 1800 mm, LED, Dali, downwards: 100%</b>			
<b>Product code</b>	<b>Definition</b>	<b>Net price excl. VAT</b>	<b>EUR</b>
5801-	3000 lm		723
5802-	4500 lm		723
5803-	6000 lm		723

<b>L 1800 mm, LED, Dali, up/down: 35/65</b>			
<b>Product code</b>	<b>Definition</b>	<b>Net price excl. VAT</b>	<b>EUR</b>
5804-	7500 lm (2625/4875)		780
5805-	9000 lm (3150/5850)		780

<b>L 1800 mm, LED, Dali, up/down: 50/50</b>			
<b>Product code</b>	<b>Definition</b>	<b>Net price excl. VAT</b>	<b>EUR</b>
5806-	6000 lm (3000/3000)		780
5807-	9000 lm (4500/4500)		780

<b>L 1800 mm, LED, Dali, up/down: 65/35</b>			
<b>Product code</b>	<b>Definition</b>	<b>Net price excl. VAT</b>	<b>EUR</b>
5808-	7500 lm (4875/2625)		780
5809-	9000 lm (5850/3150)		780

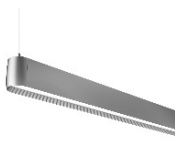
Select colour, colour temperature etc. in the table.							
<b>Colour</b>	<b>Price</b>	<b>Shade</b>	<b>Price</b>	<b>Colour temperature</b>	<b>Price</b>	<b>Colour of lead</b>	<b>Price</b>
0 = raw untreated	0	M = mikroprismatic	0	827 = 2700 K, 80 Ra	0	empty = white	0
01 = raw anodized	0			930 = 3000 K, 90 Ra	0	Y = black	0
1 = white	0			940 = 4000 K, 90 Ra	0		
9 = alu-grey	0						
17 = corten brown	0						
66 = noir 900	0						
Other RAL colours	134						
<b>Example order code:</b> 5804-9M930 = Pelée Line 1800, 35/65, alu-grey, prismatic shade, 3000 K							



<b>L 2350 mm, LED, Dali</b>			
<b>Product code</b>	<b>Definition</b>	<b>Net price excl. VAT</b>	<b>EUR</b>
5812-	8000 lm, 100% downwards		<b>1068</b>
5815-	12000 lm, 35/65 up/down		<b>1125</b>
5817-	12000 lm, 50/50 up/down		<b>1125</b>
5819-	12000 lm, 65/35 up/down		<b>1125</b>
Lower luminous power upon request			

Select colour, colour temperature etc. in the table.

<b>Colour</b>	<b>Price</b>	<b>Shade</b>	<b>Price</b>	<b>Colour temperature</b>	<b>Price</b>	<b>Colour of lead</b>	<b>Price</b>
0 = raw untreated	0	M = mikroprismatic	0	827 = 2700 K, 80 Ra	0	empty = white	0
01 = raw anodized	0			930 = 3000 K, 90 Ra	0	Y = black	0
1 = white	0			940 = 4000 K, 90 Ra	0		
9 = alu-grey	0						
17 = corten brown	0						
66 = noir 900	0						
Other RAL colours	<b>134</b>						



<b>L 2900 mm, LED, Dali</b>			
<b>Product code</b>	<b>Definition</b>	<b>Net price excl. VAT</b>	<b>EUR</b>
5823-	10000 lm, 100% downwards		<b>1185</b>
5825-	15000 lm, 35/65 up/down		<b>1242</b>
5827-	15000 lm, 50/50 up/down		<b>1242</b>
5829-	15000 lm, 65/35 up/down		<b>1242</b>
Lower luminous power upon request			

Select colour, colour temperature etc. in the table.

<b>Colour</b>	<b>Price</b>	<b>Shade</b>	<b>Price</b>	<b>Colour temperature</b>	<b>Price</b>	<b>Colour of lead</b>	<b>Price</b>
0 = raw untreated	0	M = mikroprismatic	0	827 = 2700 K, 80 Ra	0	empty = white	0
01 = raw anodized	0			930 = 3000 K, 90 Ra	0	Y = black	0
1 = white	0			940 = 4000 K, 90 Ra	0		
9 = alu-grey	0						
17 = corten brown	0						
66 = noir 900	0						
Other RAL colours	<b>134</b>						

## H+M RECESSED



Ø 300 mm, LED			
Product code	Definition	Net price excl. VAT	EUR
2860-	11 W LED 244, 350 mA		324
2861-	15 W LED 244, 500 mA		324

Select colour, screen type, colour temperature, etc. in the table below and construct the order code as shown below.

Colour	Price	Screen type	Price	Colour temperature	Price	Dimming	Price
0 = raw untreated	0	P = polycarbonate	0	927 = 2700 K, 90 Ra	0	empty = no dimm.	0
1 = white	0	M = micro prismatic acryl	0	930 = 3000 K, 90 Ra	0	V = 1-10 V	10
3 = black	0			940 = 4000 K, 90 Ra	0	D = DALI	20
9 = grey metallic	0			9WD = TW, Dali, 90 Ra	74		
Other RAL colours	27						

**Example Order code: 2861-9P930D** = H+M 300, 15 W, grey metallic, polycarbonate screen, 3000 K, Dali control

Extras			
Product code	Description	Net price excl. VAT	EUR
2860-001	Reinforcement for soft ceilings, H+M 300		27



Ø 380 mm, LED			
Product code	Definition	Net price excl. VAT	EUR
2866-	17 W LED 324, 500 mA		404
2867-	23 W LED 324, 700 mA		404
2868-	33 W LED 324, 1050 mA, incl. Dali driver		458

Select colour, screen type, colour temperature, etc. in the table below and construct the order code as shown below.

Colour	Price	Screen type	Price	Colour temperature	Price	Dimming	Price
0 = raw untreated	0	P = polycarbonate	0	927 = 2700 K, 90 Ra	0	empty = no dimm.	0
1 = white	0	M = micro prismatic acryl	0	930 = 3000 K, 90 Ra	0	V = 1-10 V	10
3 = black	0			940 = 4000 K, 90 Ra	0	D = DALI	20
9 = grey metallic	0			9WD = TW, Dali, 90 Ra	94		
Other RAL colours	27						

**Example Order code: 2867-1P9WD** = H+M 380, 23 W, white, polycarbonate screen, 3000 K, tunable white, Dali

Extras			
Product code	Description	Net price excl. VAT	EUR
2834-20	Reinforcement for soft ceilings, H+M 380		27

## H+M SURFACE-MOUNTING



Ø 300 mm, LED			
Product code	Definition	Net price excl. VAT	EUR
2870-	11 W LED 244, 350 mA		286
2871-	15 W LED 244, 500 mA		286

Select colour, colour temperature, etc. in the table below and construct the order code as shown below.

Colour	Price	Screen type	Price	Colour temperature	Price	Dimming	Price
0 = raw untreated	0	P = polycarbonate	0	927 = 2700 K, 90 Ra	0	empty = no dimm.	0
1 = white	0	MP = micro prismatic	40	930 = 3000 K, 90 Ra	0	V = 1-10 V	10
3 = black	0			940 = 4000 K, 90 Ra	0	D = DALI	20
9 = grey metallic	0			9WD = TW, Dali, 90 Ra	74		
Other RAL colours	40						
<b>Spings for wall m.</b>	<b>Price</b>						
F = two springs	6						

**Example Order code: 2870-3P9WD** = H+M surface mount 300, 11 W, black, tunable white, 90 Ra, Dali



Ø 380 mm, LED			
Product code	Definition	Net price excl. VAT	EUR
2876-	17 W LED 324, 500 mA		348
2877-	23 W LED 324, 700 mA		348
2878-	33 W LED 324, 1050 mA, incl. Dali driver		402

Select colour, colour temperature, etc. in the table below and construct the order code as shown below.

Colour	Price	Screen type	Price	Colour temperature	Price	Dimming	Price
0 = raw untreated	0	P = polycarbonate	0	927 = 2700 K, 90 Ra	0	empty = no dimm.	0
1 = white	0	MP = micro prismatic	40	930 = 3000 K, 90 Ra	0	V = 1-10 V	10
3 = black	0			940 = 4000 K, 90 Ra	0	D = DALI	20
9 = grey metallic	0			9WD = TW, Dali, 90 Ra	94		
Other RAL colours	40						
<b>Spings for wall m.</b>	<b>Price</b>						
F = two springs	6						

**Example Order code: 2877-1P930D** = H+M surface mount 380, 23 W, white, 3000 K, 90 Ra, Dali

## H+M PENDANT



Ø 300 mm, LED			
Product code	Definition	Net price excl. VAT	EUR
1812-	11 W LED 244, 350 mA		334
1813-	15 W LED 244, 500 mA		334

Select colour, colour temperature, etc. in the table below and construct the order code as shown below.

Colour	Price	Colour temperature	Price	Dimming	Price	Colour of lead	Price
0 = raw untreated	0	927 = 2700 K, 90 Ra	0	empty = no dimming	0	empty = white	0
1 = white	0	930 = 3000 K, 90 Ra	0	V = 1-10 V	15	Y = black	0
3 = black	0	940 = 4000 K, 90 Ra	0	D = DALI	20		
4 = graphite grey	0	9WD = TW, Dali, 90 Ra	74				
Other RAL colours	54						

**Example Order code:** 1812-39WD = H+M pendant 300, 11 W, black, tunable white, 90 Ra, Dali



Ø 380 mm, LED			
Product code	Definition	Net price excl. VAT	EUR
1818-	17 W LED 324, 500 mA		380
1819-	23 W LED 324, 700 mA		380
1820-	33 W LED 324, 1050 mA, incl. Dali driver		432

Select colour, colour temperature, etc. in the table below and construct the order code as shown below.

Colour	Price	Colour temperature	Price	Dimming	Price	Colour of lead	Price
0 = raw untreated	0	927 = 2700 K, 90 Ra	0	empty = no dimming	0	empty = white	0
1 = white	0	930 = 3000 K, 90 Ra	0	V = 1-10 V	15	Y = black	0
3 = black	0	940 = 4000 K, 90 Ra	0	D = DALI	20		
4 = graphite grey	0	9WD = TW, Dali, 90 Ra	94				
Other RAL colours	54						

**Example Order code:** 1818-1927D = H+M pendant 380, 17 W, white, 2700 K, 90 Ra, Dali



Ø 300 mm, E27			
Product code	Definition	Net price excl. VAT	EUR
1006-	E27, max 57 W, max length: 95 mm		214



Ø 380 mm, E27			
Product code	Definition	Net price excl. VAT	EUR
1008-	E27, max 77 W, max length: 140 mm		243

Select colour in the table below and construct the order code as shown below.

Colour	Price	Colour of lead	Price				
0 = raw untreated	0	empty = white	0				
1 = white	0	Y = black	0				
3 = black	0						
4 = graphite grey	0						
Other RAL colours	54						

**Example Order code:** 1006-1 = H+M pendant 300, E27, white

**PUNKT LAMP**



<b>Ø 65 mm, LED with driver</b>			
Product code	Definition	Net price excl. VAT	EUR
2890-	5 W V6, 350 mA		67

Select colour and colour temperature in the table below and construct the order code as shown below.

Colour	Price	Colour temperature	Price	Dimming	Price
2 = white w. glass	0	927 = 2700 K, 90 Ra	0	empty = no dimming	0
9 = alu w. glass	0	930 = 3000 K, 90 Ra	0	T = Triac	0
		940 = 4000 K, 90 Ra	0	V = 1-10 V	17
				D = DALI	24

**Example Order code:** 2890-2927V = Punkt Lamp Ø65, 5 W, white w. glass, 2700 K, 1-10 V dimming

<b>Extras</b>			
Product code	Description	Net price excl. VAT	EUR
2700-20	Ring for soft ceilings		7



<b>Ø 90 mm, LED</b>			
Product code	Definition	Net price excl. VAT	EUR
2891-	5 W V6, 350 mA		138
2895-	7 W V6, 500 mA		138

Select colour and colour temperature in the table below and construct the order code as shown below.

Colour	Price	Colour temperature	Price	Dimming	Price
2 = white w. glass	0	927 = 2700 K, 90 Ra	0	empty = no dimming	0
9 = alu w. glass	0	930 = 3000 K, 90 Ra	0	V = 1-10 V	0
		940 = 4000 K, 90 Ra	0	D = DALI	8

**Example Order code:** 2891-2927 = Punkt Lamp Ø90, 5 W, white w. glass, 2700 K

<b>Ø 90 mm, other than LED</b>			
Product code	Definition	Net price excl. VAT	EUR
2901-	GU10		60

Select colour in the table below and construct the order code as shown below.

Colour	Price
2 = white w. glass	0
9 = alu w. glass	0

**Example Order Code:** 2901-2 = Punkt Lamp Ø90, GU10 base, white w. glass

<b>Extras</b>			
Product code	Description	Net price excl. VAT	EUR
2010-20	Ring for soft ceilings		7



<b>Ø 110 mm, LED</b>			
Product code	Definition	Net price excl. VAT	EUR
2899-	6 W V8, 250 mA		172
2892-	8 W V8, 350 mA		172
2896-	11 W V8, 500 mA		172

Select colour and colour temperature in the table below and construct the order code as shown below.					
Colour	Price	Colour temperature	Price	Dimming	Price
2 = white w. glass	0	927 = 2700 K, 90 Ra	0	empty = no dimming	0
9 = alu w. glass	0	930 = 3000 K, 90 Ra	0	V = 1-10 V	10
		940 = 4000 K, 90 Ra	0	D = DALI	20

**Example Order code:** 2892-2927V = Punkt Lamp Ø110, 9 W, white w. glass, 2700 K, 1-10 V dimming

<b>Extras</b>			
Product code	Description	Net price excl. VAT	EUR
2020-20	Ring for soft ceilings		7



<b>Ø 150 mm, LED</b>			
Product code	Definition	Net price excl. VAT	EUR
2893-	11 W V8, 500 mA		214
2898-	16 W V8, 700 mA		214

Select colour and colour temperature in the table below and construct the order code as shown below.					
Colour	Price	Colour temperature	Price	Dimming	Price
2 = white w. glass	0	927 = 2700 K, 90 Ra	0	empty = no dimming	0
9 = alu w. glass	0	930 = 3000 K, 90 Ra	0	V = 1-10 V	10
		940 = 4000 K, 90 Ra	0	D = DALI	20

**Example Order code:** 2898-9930D = Punkt Lamp Ø150, 17 W, alu w. glass, 3000 K, Dali dimming

<b>Extras</b>			
Product code	Description	Net price excl. VAT	EUR
2030-20	Ring for soft ceilings		8
20152	Glass shade, 3 mm		11



<b>Ø 200 mm, LED</b>			
Product code	Definition	Net price excl. VAT	EUR
2894-	17 W Vero18, 500 mA		243
2897-	24 W Vero18, 700 mA		243

Select colour and colour temperature in the table below and construct the order code as shown below.					
Colour	Price	Colour temperature	Price	Dimming	Price
2 = white w. glass	0	927 = 2700 K, 90 Ra	0	empty = no dimming	0
9 = alu w. glass	0	930 = 3000 K, 90 Ra	0	V = 1-10 V	10
		940 = 4000 K, 90 Ra	0	D = DALI	20

**Example Order Code:** 2897-9927D = Punkt Lamp Ø200, 24 W, alu w. glass, 2700 K, Dali dimming

<b>Extras</b>			
Product code	Description	Net price excl. VAT	EUR
2040-20	Ring for soft ceilings		11
20202	Glass shade, 3 mm		12

## LED modules - indoor & wall fittings

The item number of an LED module consists of four digits followed by the code for colour temperature and CRI plus dimming type, if any. There is no extra charge for 1-10 V dimming, whereas the Dali control will be charged with EUR 13.-

The prices below are net-net prices. There is no discount on these prices.

	Item No.	LED	Comment 1	Comment 2	EUR
<b>H+M Ø300 downlights</b>	1901-	11 W 350 mA			97
	1902-	15 W 500 mA			97
<b>H+M Ø380 downlights</b>	1903-	17 W 500 mA			118
	1904-	23 W 700 mA			118
	1968-	33 W 1050 mA, Dali			169
<b>H+M Pendant Ø300</b>	1905-	11 W 350 mA	From CFL		110
	1906-	15 W 500 mA	From CFL		110
<b>H+M Pendant Ø380</b>	1907-	17 W 500 mA	From CFL		138
	1908-	23 W 700 mA	From CFL		138
<b>STOA</b>	1909-	10 W 350 mA	Interior and exterior		77
	1910-	14 W 500 mA			77
<b>QUARTO 270</b>	1972-	6 W 250 mA	Interior and exterior		48
	1911-	8 W 350 mA			48
	1912-	11 W 500 mA			48
<b>QUARTO 380</b>	1980-	8 W 350 mA			48
	1913-	11 W 500 mA			48
	1914-	16 W 700 mA			48
<b>SQUARE 250</b>	1971-	10 W 250 mA	Interior and exterior		87
	1915-	15 W 350 mA	Models before 2004 to be quoted		87
<b>SQUARE 250 downwards</b>	1977-	8 W 250 mA	Interior and exterior		87
	1950-	12 W 350 mA			87
<b>SQUARE 270</b>	1916-	15 W 350 mA	Models before 2015 only	Wall box included	103
	1954-	20 W 500 mA	Models before 2015 only	Wall box included	103
	1915-	15 W 350 mA	Models after 2015		87
	1978-	20 W 500 mA	Models after 2015		87
<b>SQUARE 270 downwards</b>	1977-	8 W 250 mA	Models after 2015 only		87
	1950-	12 W 350 mA	Models after 2015 only		87
<b>NYX 190 WALL</b>	1974-	6 W 250 mA			58
	1917-	8 W 350 mA			58
	1918-	11 W 500 mA			58
<b>TEMA BUEN</b>	1929-	8 W 350 mA	Models after 1996 only		59
	downwards only	1930-	11 W 500 mA	Models after 1996 only	59
<b>TEMA BUEN</b>	1981-	10 W 250 mA	Models after 1996 only		74
	up and downwards	1951-	14 W 350 mA	Models after 1996 only	74
	1952-	20 W 500 mA	Models after 1996 only		74
<b>TEMA SIGTEN</b>	1931-	8 W 350 mA	Models after 1996 only		59
	1932-	11 W 500 mA	Models after 1996 only		59
<b>TEMA KLAMPEN 205</b>	1933-	8 W 250 mA	Models after 1996 only		83
<b>TEMA KLAMPEN 250</b>	1934-	12 W 350 mA	Models after 1996 only		83
	1935-	16 W 500 mA	Models after 1996 only		83
<b>TEMA GRØNNEGADE 385</b>	1936-	8 W 250 mA	Models after 1996 only		86
	1937-	11 W 350 mA	Models after 1996 only		86
<b>TEMA GRØNNEGADE 490</b>	1938-	12 W 350 mA	Models after 1996 only		122
	1939-	16 W 500 mA	Models after 1996 only		122

## LED modules - bollards and pole top luminaires

The item number of an LED module consists of four digits followed by the code for colour temperature and CRI plus dimming type, if any.  
 There is no extra charge for 1-10 V dimming, whereas the Dali control will be charged with EUR 13.-  
 Extra charge for class II is EUR 13.-

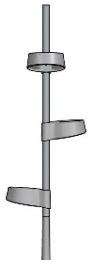
The prices below are net-net prices. There is no discount on these prices.

<b>NYX 190 BOLLARD</b>	1973-	6 W 250 mA	Not for DragonEye versions (sold until April 2013)		<b>87</b>
class I and II	1919-	8 W 350 mA	Same module for class I and II luminaires.		<b>87</b>
	1955-	11 W 500 mA			<b>87</b>
	1960-	16 W 700 mA			<b>87</b>
<b>NYX 330 COMFORT</b>	1920-	32 W, 2x6 DA	Including brackets and reflector	Programmable	<b>193</b>
<b>NYX 330 FASTFLEX T3</b>	1921-	40 W, high lumen	Including brackets and reflector	Programmable	<b>193</b>
<b>NYX 330 FASTFLEX T3</b>	1946-	22 W, low lumen	Including brackets and reflector	Programmable	<b>193</b>
<b>NYX 330 FASTFLEX SCL</b>	1969-	40 W, high lumen	Including brackets and reflector	Programmable	<b>193</b>
<b>NYX 330 FASTFLEX SCL</b>	1970-	22 W, low lumen	Including brackets and reflector	Programmable	<b>193</b>
<b>NYX 450</b>	To be quoted				
<b>STICKS 900 single</b>	1923-	8 W, 500 mA	including connection box		<b>346</b>
	1924-	11 W, 700 mA	including connection box		<b>346</b>
<b>STICKS 900 double</b>	1925-	15 W, 500 mA	including connection box		<b>387</b>
	1926-	20 W, 700 mA	including connection box		<b>387</b>
<b>TEMA BOLLARD 1000</b>	1975-	8 W 250 mA	Models after 1996 only	Including shade and sealing for base lid	<b>132</b>
without door	1940-	12 W 350 mA	Models after 1996 only	Including shade and sealing for base lid	<b>132</b>
	1941-	16 W 500 mA	Models after 1996 only	Including shade and sealing for base lid	<b>132</b>
<b>TEMA BOLLARD 1000</b>	1976-	8 W 250 mA	Models after 1996 only	Including shade and sealing for base lid	<b>235</b>
with door, option for cl. II	1964-	12 W 350 mA	Models after 1996 only	Including shade and sealing for base lid	<b>235</b>
	1965-	16 W 500 mA	Models after 1996 only	Including shade and sealing for base lid	<b>235</b>
Brackets for old models	12-045		Models before 1996 only	For pre 1996 models	<b>17</b>
<b>TEMA BOLLARD 1100</b>	1942-	12 W 350 mA		Including sealing for base lid	<b>195</b>
	1943-	16 W 500 mA		Including sealing for base lid	<b>195</b>
<b>TEMA PARK</b>	1944-	17 W 500 mA	Models after 1996 only	Including top plate, shade and sealing	<b>258</b>
	1945-	24 W 700 mA	Models after 1996 only	Including top plate, shade and sealing	<b>258</b>

## COLUMNS FOR MULTIPLE NYX 330

Five standard solutions with two and three lanterns respectively are described in data sheet at [www.focus-lighting.dk](http://www.focus-lighting.dk)

### For 3 mid-column lanterns



<b>6.6 meter galvanised column for Multiple Nyx, 4.8 m conical with 1.8 m cylindrical extender</b>			
Product code	Mounting	Net price excl. VAT	EUR
3160-	rooted base		451
3260-	flanged base		513
	Powder coating 6,8 meter column, see codes below		304

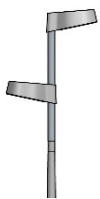
<b>4.8 meter galvanised column for Multiple Nyx, 3 m conical with 1.8 m cylindrical extender</b>			
Product code	Mounting	Net price excl. VAT	EUR
3162-	rooted base		356
3262-	flanged base		423
	Powder coating 4,8 meter column, see codes below		226

### For 2 mid-column and 1 top-post lantern



<b>5 meter galvanised column for Multiple Nyx, 3.5 m conical with 1.5 m cylindrical extender</b>			
Product code	Mounting	Net price excl. VAT	EUR
3164-	rooted base		435
3264-	flanged base		423
	Powder coating 5 meter column, see codes below		226

### For 1 mid-column and 1 top-post lantern



<b>5 meter galvanised column for Multiple Nyx, 4 m conical with 1 m cylindrical extender</b>			
Product code	Mounting	Net price excl. VAT	EUR
3163-	rooted base		392
3263-	flanged base		451
	Powder coating 5 meter column, see codes below		226

<b>4 meter galvanised column for Multiple Nyx, 3 m conical with 1 m cylindrical extender</b>			
Product code	Mounting	Net price excl. VAT	EUR
3161-	rooted base		310
3261-	flanged base		372
	Powder coating 4 meter column, see codes below		189

### Powder coat

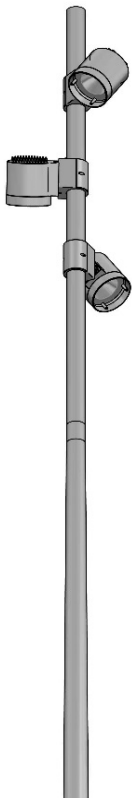
Select colour and form the product code as shown below. The digit 7 for galvanising is replaced by the colour code.	
Colour code columns	The above prices apply to RAL colours and the following Focus standard colours:
3 = black RAL 9005	
4 = graphite grey	
7 = galvanised	
9 = silver grey	
17 = corten brown	
66 = schwarz noir 900	
<b>Example Order code: 3162-7 = 4.8 m column for embedment, galvanised</b>	

**OPTIONAL COMPONENTS**

<b>Product code</b>	<b>Type</b>	<b>Net price excl. VAT</b>	<b>EUR</b>
50200	Rooted base Ø 108-140 mm		<b>24</b>
50201	Top closing for 60 mm column, grey		<b>4</b>
50205	Top closing for 60 mm column, black		<b>4</b>
98158	Fuse box for 2 Neozed fuses up to 16 A		<b>34</b>

**We grant no discount on columns and OCP components**

## COLUMNS FOR TURN



<b>4 m column: 3 m conical + 1 m cylindrical rod Ø76 mm - for two fittings</b>			
Product code	Mounting	Net price excl. VAT	EUR
3170-	rooted base		365
3270-	flanged base		434
	Powder coating 4 meter column, see codes below		189

<b>5.5 m column: 3.5 m conical + 2 m cylindrical rod Ø76 mm - for three fittings</b>			
Product code	Mounting	Net price excl. VAT	EUR
3172-	rooted base		459
3272-	flanged base		526
	Powder coating 5,5 meter column, see codes below		261

<b>7 m column: 3.8 m conical + 3.2 m cylindrical rod Ø76 mm - for three or more fittings</b>			
Product code	Mounting	Net price excl. VAT	EUR
3174-	rooted base		504
3274-	flanged base		577
	Powder coating 7 meter column, see codes below		304

Select colour and form the product code as shown below. The digit 7 for galvanising is replaced by the colour code.			
Colour code columns	The above prices apply to RAL colours and the following Focus standard colours:		
4 = graphite grey			
7 = galvanised			
9 = silver grey			
17 = corten brown			
66 = schwarz noir 900			
Other RAL colours are coded in connection with quote or order.			
<b>Example Order code: 3172-17 = 5.5 m column for embedment, corten brown</b>			

Options	Type	Net price excl. VAT	EUR
1714-1	Adapter for Ø 60 mm rod		40
50200	Rooted base Ø 108-140 mm		24
50206	Top closing Ø76 pole, grey		5
50207	Top closing Ø76 pole, black		5
98158	Fuse box for 2 Neozed fuses up to 16 A		34
50271	Fuse box for 3 Neozed fuses up to 16 A		94

7 m and 5.5 m post:

**We grant no discount on columns and optional items.**

**SPACE & SKY  
COLUMNS**



<b>Conical, galvanised column Ø 90 mm with Ø 60 / H 100 top pipe</b>			
<b>Varenummer</b>	<b>Højde</b>	<b>Net price excl. VAT</b>	<b>EUR</b>
3350-7	3 meter, rooted base		356
3450-7	3 meter, flanged base		420
	Powder coating 3 meter column, see codes below		177
3351-7	3.5 meter, rooted base		364
3451-7	3.5 meter, flanged base		430
	Powder coating 3.5 meter column, see codes below		185
3352-7	4 meter, rooted base		373
3452-7	4 meter, flanged base		438
	Powder coating 4 meter column, see codes below		189
3353-7	4.5 meter, rooted base		383
3453-7	4.5 meter, flanged base		447
	Powder coating 4.5 meter column, see codes below		207

<b>Cylindrical, galvanised column Ø 90 mm with Ø 60 / H 100 top pipe</b>			
<b>Product code</b>	<b>Height</b>	<b>Net price excl. VAT</b>	<b>EUR</b>
3150-	3 meter, rooted base		367
3250-	3 meter, flanged base		431
	Powder coating 3 meter column, see codes below		177

3151-	3.5 meter, rooted base		383
3251-	3.5 meter, flanged base		447
	Powder coating 3.5 meter column, see codes below		185

3152-	4 meter, rooted base		399
3252-	4 meter, flanged base		463
	Powder coating 4 meter column, see codes below		189

3153-	4.5 meter, rooted base		400
3253-	4.5 meter, flanged base		466
	Powder coating 4.5 meter column, see codes below		207

50202	Rooted base Ø 62-90 mm		24
8016-	Connection ring for 90 mm column		13

**Powder coat**

Select colour and form the product code as shown below. The digit 7 for galvanising is replaced by the colour code.	
<b>Colour code columns</b>	
4 = graphite grey	
7 = galvanised	
9 = silver grey	
17 = corten brown	
66 = black noir 900	
Other RAL colours are coded in connection with quote or order.	
Example Order code: 3152-66 = 4 meter Ø 90 mm column, noir 900	

<b>Fuse box for Ø 90 mm column</b>			
<b>Product code</b>	<b>Type</b>	<b>Net price excl. VAT</b>	<b>EUR</b>
6949	DI Euro Mini, max 2 of 4 x 16 mm <sup>2</sup> , class II		<b>48</b>
6949-J	DI Euro Mini, max 2 of 5 x 10 mm <sup>2</sup> , class I		<b>48</b>
50279	Nipa HSW 1194, max 2 of 5 x 6 mm <sup>2</sup>		<b>64</b>

<b>Fuse box for Ø 90 mm conical column</b>			
<b>Product code</b>	<b>Type</b>	<b>Net price excl. VAT</b>	<b>EUR</b>
98158	Fuse box for 2 Neozed fuses up to 16 A		<b>34</b>
50271	Fuse box for 3 Neozed fuses up to 16 A, conical: min 4 m high		<b>94</b>

**We grant no discount on columns and OCP components**

## COLUMNS

### Galvanised standard columns

Product code	Height	Net price excl. VAT	EUR
5130-7	3 meter conical column, rooted base		258
5230-7	3 meter conical column, flanged base		334
	Powder coating 3 meter column, see codes below		177
5135-7	3.5 meter conical column, rooted base		265
5235-7	3.5 meter conical column, flanged base		348
	Powder coating 3.5 meter column, see codes below		185
5140-7	4 meter conical column, rooted base		289
5240-7	4 meter conical column, flanged base		372
	Powder coating 4 meter column, see codes below		189
5150-7	5 meter conical column, rooted base		334
5250-7	5 meter conical column, flanged base		426
	Powder coating 5 meter column, see codes below		226
5160-7	6 meter conical column, rooted base		389
5260-7	6 meter conical column, flanged base		469
	Powder coating 6 meter column, see codes below		261
5170-7	7 meter conical column, rooted base		443
5270-7	7 meter conical column, flanged base		539
	Powder coating 7 meter column, see codes below		304

### POWDER COATING

Select colour and form the product code as shown below. The digit 7 for galvanising is replaced by the colour code.	
<b>Colour code columns</b>	
3 = black RAL 9005	
4 = graphite grey	
9 = silver grey	
17 = corten brown	
66 = black noir 900	
Other RAL colours are coded in connection with quote or order.	
<b>Example product code: 5150-4</b> = 5 meter conical column, rooted base, graphite grey	

**We grant no discount on columns and OCP components**

## ADDITIONAL EQUIPMENT

	Product code	Description	Net price excl. VAT	EUR
<b>Fuse box</b>	98158	Fuse box for 2 Neozed fuses up to 16 A		34
	50271	Fuse box for 3 Neozed fuses up to 16 A, conical: min 4 m high		94
	50280	Class II, 10 kV surge protection, conical: min 4 m high		97
	50279	Class II, 1 fuse, Nipa Mini, max 2 of 5 x 6 mm <sup>2</sup>		64
	6949	Class II, 1 fuse, DI Euro Mini, max 2 of 4 x 16 mm <sup>2</sup>		48
	6949-J	Class I, 1 fuse, DI Euro Mini, max 2 of 5 x 16 mm <sup>2</sup>		48
<b>Cable entry</b>	50100	Cable entry		7
<b>Cable sleeve</b>	50204	Cable sleeve, black, for 152 x 57 mm hole		7
<b>Top closure</b>	50201	Top closure for Ø60 column, grey (also available in black)		4
	50206	Top closure for Ø76 column, grey (also available in black)		5
<b>Wing base</b>	50200	Nipa wing base Ø108-140 column		24
	50202	Nipa wing base Ø62-90 column		24
	50208	Nipa wing base Ø141-200 column		24
<b>Concrete base</b>	50301	Nipa concrete base		215
<b>Ring-shaped base</b>	50276	DanIntra ring-shaped base		102

**We grant no discount on columns and OCP components**

**Colour codes**

<b>Powder coating</b>	<b>Akzo Nobel</b>
Graphite grey	YW355F, D2525
Silver grey	Y2370I, D2525
Black	RAL 9005, SN805G
Black noir 900	Noir 900 Sablé, SN351F
White	RAL 9010 Textura, SA310G
Corten brown	YX355F, D2525

<b>Wet coating</b>	
Alu	RAL 9006
Graphite grey	MO125, Esbjerg Lak og Farver
White	RAL 9010, shine 30
Black	RAL 9005, shine 30

## General Sales and Delivery Terms

Unless there is another written agreement, the following terms apply to all Focus Lighting A/S' ("Focus Lighting") deliveries.

### 1. Prices

- a. Prices quoted are excl. VAT, duty and any other taxes.
- b. Goods are delivered at the price valid on the day of delivery if nothing else is agreed in writing.
- c. List prices can be changed without notice.

### 2. Quotations:

- a. Quotations are valid for 30 days.
- b. All drawings, technical specifications etc. are the property of Focus Lighting AS and may not be copied or given to a third person for production purposes.

### 3. Terms of delivery:

- a. All deliveries are ex works Focus Lighting AS or subsupplier.
- b. Time of delivery is without obligation. Compensation for loss or damage caused by delay of delivery will under no circumstances be accepted.
- c. Forwarding of goods is for the account and risk of the purchaser.
- d. If, at the time of delivery, the purchaser fails to collect the ordered goods, Focus Lighting AS will store and insure the goods at the cost of the purchaser. If, after a written request, the purchaser does not collect the goods ordered, Focus Lighting AS has the right to sell the goods at the best possible price at the cost of the purchaser.

### 4. Terms of payment:

- a. Payment for registered customers: 30 days net
- b. Payment for non-registered customers: Pre-payment or bank guarantee
- c. Any delay in payment will result in a 2% penalty interest per month.
- d. All goods remain the property of Focus Lighting AS until full settlement of accounts.

### 5. Claims and Responsibility

- a. All goods need to be checked upon receipt.
- b. Claims regarding the delivery must be made within 8 days from receipt of goods. Technical claims must be made in writing within 14 days after the problem has arisen. Products, which have been in use for more than five years, are not covered by any warranty.
- c. Products with material or manufacturing defects will be repaired or replaced by Focus Lighting AS. The decision as to repair or replacement lies with Focus Lighting AS.
- d. For LED's and other lamps, drivers, and high-frequency ballast equipment, the warranty terms of the equipment manufacturer are in force.
- e. Focus Lighting disclaims any responsibility for damage to the products caused in whole or in part as a result of transients or other irregularities in the voltage to which the product in question is connected.

- f. Focus Lighting disclaims any responsibility for delays that arise in whole or in part from subcontractors and are thus beyond Focus Lighting's control.
- g. Lighting calculations made by Focus Lighting are intended as guidelines only and Focus Lighting cannot be held responsible for any miscalculations.
- h. Focus Lighting's liability can at no time exceed the contract sum for the specific purchase of goods.

### 6. Warranty:

- a. Focus Lighting warrants that during a period of five years from the date of invoice the products will be free from defects in material and workmanship and will conform to Focus Lighting's written specifications applicable to the particular products as those specifications exist on the date of delivery.
- b. The warranty does not apply and will be void if the product is subjected to improper operation, neglect, misuse, alteration, abuse, wilful damage, negligent operation, or failure to follow the instructions given by Focus Lighting AS.

### 7. Return of goods:

- a. Return of products is subject to preceeding arrangements with Focus Lighting.
- b. Specially designed products cannot be returned.

### 8. Force Majeure:

- a. All orders and deliveries will be produced with reservation for strikes, lock-out, war, fire, cyber attacks, epidemics and other force majeure.
- b. When delivery is not possible due to force majeure, the delivery will be postponed as long as the situation is in force plus a fair amount of time to normalise the production.
- c. If delivery is expected to be delayed more than 8 weeks, both the purchaser and Focus Lighting AS will be entitled to cancel the order without this being considered neglect of the agreement.

### 9. Governing Law and Venue

- a. The terms shall be governed by Danish law. However, the United Nations Convention on Contracts for the International Sale of Goods (Vienna, 1980) (CISG) shall not apply.
- b. Any dispute arising out of or in connection with the Terms of Sales, including any disputes regarding the existence, validity or termination thereof, shall be settled at the Maritime and Commercial Court of Copenhagen or, in matters where the Maritime and Commercial of Copenhagen does not have jurisdiction, the District Court of Copenhagen, Denmark.